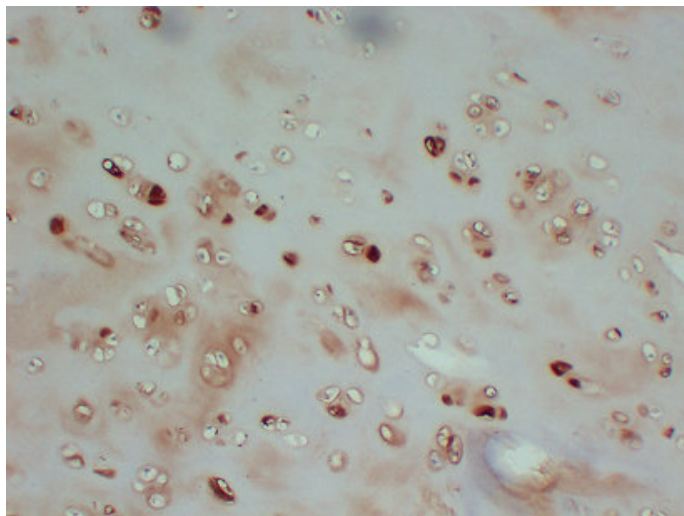


Collagen Type II (7K10) mouse mAb

Catalog_no :	AM6174
Applications :	IHC-p
Reactivity :	Human
Category :	抗原抗体
Size :	50µl/100µl
Gene_name :	COL2A1
Protein_name :	Collagen alpha-1(II) chain (Alpha-1 type II collagen) [Cleaved into: Collagen alpha-1(II) chain; Chondrocalcin]
Humanswissprot_no :	P02458
Immunogen :	Synthesized peptide derived from human Collagen Type II
Specificity :	This antibody detects endogenous levels of human Collagen Type II
Formulation :	Liquid in PBS containing 50% glycerol, 0.5% BSA and 0.02% sodium azide.
Source :	Mouse/IgG1, Kappa
Dilution :	IHC-p 1:100-500
Purification :	The antibody was affinity-purified from mouse ascites by affinity-chromatography using specific immunogen.
Concentration :	1 mg/ml
Storage_stability :	-20°C/1 year
Notes :	skeletal system development, cartilage condensation, ossification, tissue homeostasis, endochondral ossification, chondrocyte differentiation, heart morphogenesis, proteoglycan metabolic process, cell adhesion, sensory organ development, heart develop

Product Images



Immunohistochemical analysis of paraffin-embedded Cartilage. 1, Antibody was diluted at 1:200(4°,overnight). 2, Citrate buffer of pH6.0 was used for antigen retrieval. 3,Secondary antibody was diluted at 1:200(room temperature, 30min).