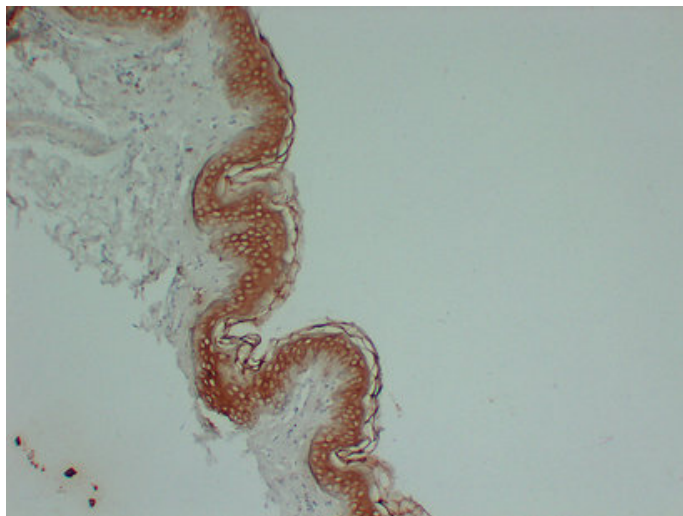


## Cytokeratin 1 (2X1) mouse mAb

|                     |  |
|---------------------|--|
| Catalog_no :        | AM6160   |
| Applications :      | IHC-p  |
| Reactivity :        | Human  |
| Category :          | 抗原抗体   |
| Size :              | 50µl/100µl   |
| Gene_name :         | KRT1 KRTA  |
| Protein_name :      | Keratin, type II cytoskeletal 1 (67 kDa cytokeratin) (Cytokeratin-1) (CK-1) (Hair alpha protein) (Keratin-1) (K1) (Type-II keratin Kb1)  |
| Humanswissprot_no : | <a href="#">P04264</a>   |
| Immunogen :         | Synthesized peptide derived from human Cytokeratin 1   |
| Specificity :       | This antibody detects endogenous levels of human Cytokeratin 1   |
| Formulation :       | Liquid in PBS containing 50% glycerol, 0.5% BSA and 0.02% sodium azide.  |
| Source :            | Mouse IgG  |
| Dilution :          | IHC-p 1:100-500  |
| Purification :      | The antibody was affinity-purified from mouse ascites by affinity-chromatography using specific immunogen.   |
| Concentration :     | 1 mg/ml  |
| Storage_stability : | -20°C/1 year   |
| Notes :             | complement activation, lectin pathway, immune effector process, activation of immune response, acute inflammatory response, activation of plasma proteins involved in acute inflammatory response, positive regulation of immune system process, proteolys |

## Product Images



Immunohistochemical analysis of paraffin-embedded Skin. 1, Antibody was diluted at 1:200(4°,overnight). 2, Citric acid ,pH6.0 was used for antigen retrieval. 3,Secondary antibody was diluted at 1:200(room temperature, 30min).