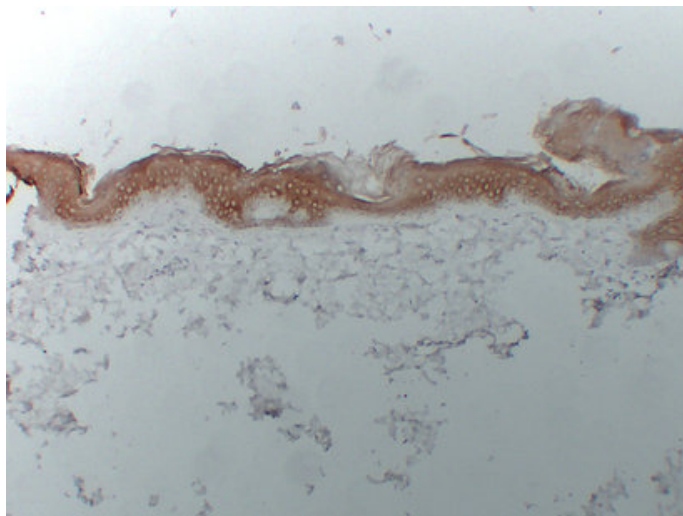


## Cytokeratin 1 (303) mouse mAb

Catalog_no :	AM6621
Applications :	IHC-p
Reactivity :	Human
Category :	抗原抗体
Size :	50µl/100µl
Gene_name :	KRT1 KRTA
Protein_name :	Keratin, type II cytoskeletal 1 (67 kDa cytokeratin) (Cytokeratin-1) (CK-1) (Hair alpha protein) (Keratin-1) (K1) (Type-II keratin Kb1)
Humanswissprot_no :	<a href="#">P04264</a>
Immunogen :	Synthesized peptide derived from human Cytokeratin 1
Specificity :	This antibody detects endogenous levels of human Cytokeratin 1
Formulation :	Liquid in PBS containing 50% glycerol, 0.5% BSA and 0.02% sodium azide.
Source :	Mouse/IgG1, Kappa
Dilution :	IHC-p 1:100-500
Purification :	The antibody was affinity-purified from mouse ascites by affinity-chromatography using specific immunogen.
Concentration :	1 mg/ml
Storage_stability :	-20°C/1 year
Notes :	complement activation, lectin pathway, immune effector process, activation of immune response, acute inflammatory response, activation of plasma proteins involved in acute inflammatory response, positive regulation of immune system process, proteolys

## Product Images



Immunohistochemical analysis of paraffin-embedded Skin. 1, Antibody was diluted at 1:200(4°,overnight). 2, Citrate buffer of pH6.0 was used for antigen retrieval. 3,Secondary antibody was diluted at 1:200(room temperature, 30min).