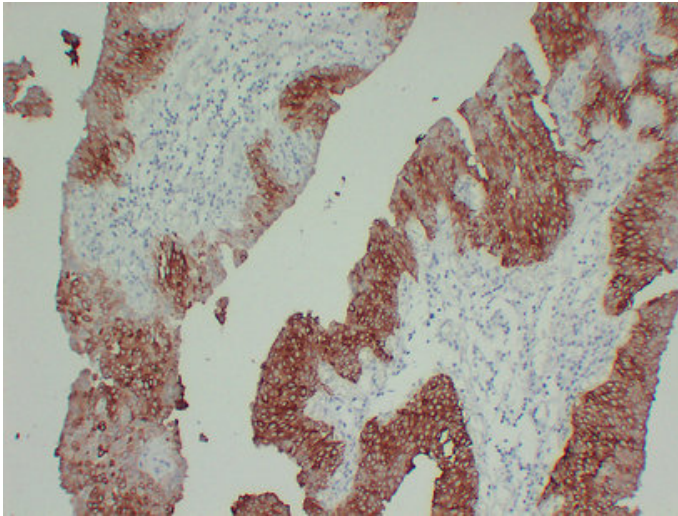




Cytokeratin 13 (4C1) mouse mAb

Catalog_no :	AM6163
Applications :	IHC-p,WB
Reactivity :	Human
Category :	抗原抗体
Size :	50µl/100µl
Gene_name :	KRT13
Protein_name :	Keratin, type I cytoskeletal 13 (Cytokeratin-13) (CK-13) (Keratin-13) (K13)
Humanswissprot_no :	P13646
Immunogen :	Synthesized peptide derived from human Cytokeratin 13
Specificity :	This antibody detects endogenous levels of human Cytokeratin 13
Formulation :	Liquid in PBS containing 50% glycerol, 0.5% BSA and 0.02% sodium azide.
Source :	Mouse/IgG1, Kappa
Dilution :	IHC-p 1:100-500 , WB 1:500-2000
Purification :	The antibody was affinity-purified from mouse ascites by affinity-chromatography using specific immunogen.
Concentration :	1 mg/ml
Storage_stability :	-20°C/1 year
Notes :	ectoderm development, sensory organ development, epidermis development, tongue development, tongue morphogenesis,

Product Images



Immunohistochemical analysis of paraffin-embedded Transitional cell carcinoma. 1, Antibody was diluted at 1:200(4°,overnight). 2, Citric acid ,pH6.0 was used for antigen retrieval. 3,Secondary antibody was diluted at 1:200(room temperature, 30min).