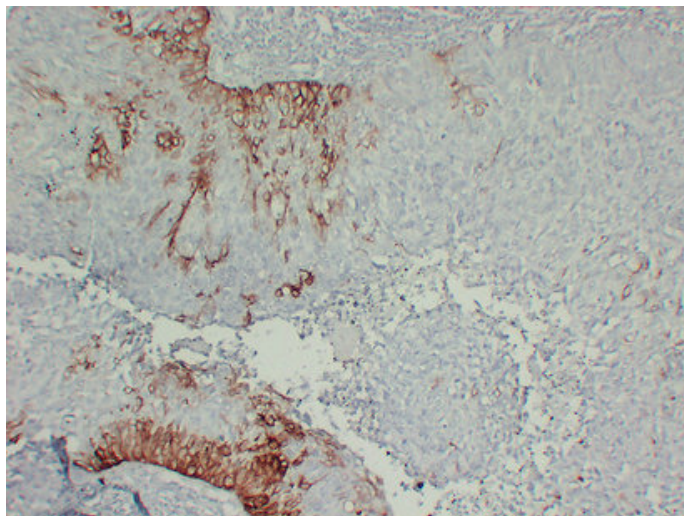




## Cytokeratin 15 (2B7) mouse mAb

Catalog_no :	AM6032
Applications :	IHC-p,WB
Reactivity :	Human
Category :	抗原抗体
Size :	50µl/100µl
Gene_name :	KRT15 KRTB
Protein_name :	Keratin, type I cytoskeletal 15 (Cytokeratin-15) (CK-15) (Keratin-15) (K15)
Humanswissprot_no :	<a href="#">P19012</a>
Immunogen :	Synthesized peptide derived from human Cytokeratin 15
Specificity :	This antibody detects endogenous levels of human Cytokeratin 15
Formulation :	Liquid in PBS containing 50% glycerol, 0.5% BSA and 0.02% sodium azide.
Source :	Mouse/IgG1, Kappa
Dilution :	IHC-p 1:100-500 , WB 1:500-2000
Purification :	The antibody was affinity-purified from mouse ascites by affinity-chromatography using specific immunogen.
Concentration :	1 mg/ml
Storage_stability :	-20°C/1 year
Notes :	ectoderm development, epidermis development,

## Product Images



Immunohistochemical analysis of paraffin-embedded Cervical squamous carcinoma. 1, Antibody was diluted at 1:200(4°,overnight). 2, Tris-EDTA,pH8.0 was used for antigen retrieval. 3,Secondary antibody was diluted at 1:200(room temperature, 30min).