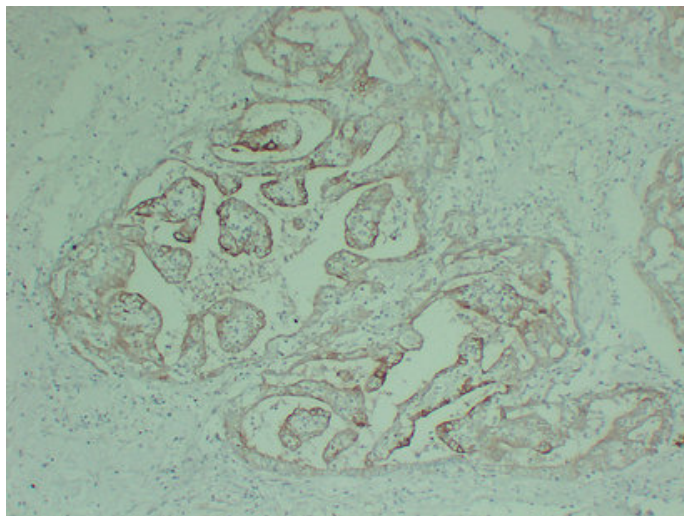


Cytokeratin 18 (3V3) mouse mAb

Catalog_no :	AM6166
Applications :	IHC-p,WB,IF
Reactivity :	Human
Category :	抗原抗体
Size :	50µl/100µl
Gene_name :	KRT18 CYK18 PIG46
Protein_name :	Keratin, type I cytoskeletal 18 (Cell proliferation-inducing gene 46 protein) (Cytokeratin-18) (CK-18) (Keratin-18) (K18)
Humanswissprot_no :	P05783
Immunogen :	Synthesized peptide derived from human Cytokeratin 18
Specificity :	This antibody detects endogenous levels of human Cytokeratin 18
Formulation :	Liquid in PBS containing 50% glycerol, 0.5% BSA and 0.02% sodium azide.
Source :	Mouse/IgG2a, Kappa
Dilution :	IHC-p 1:100-500 , WB 1:500-2000 , IF 1:500-200
Purification :	The antibody was affinity-purified from mouse ascites by affinity-chromatography using specific immunogen.
Concentration :	1 mg/ml
Storage_stability :	-20°C/1 year
Notes :	intracellular protein transport, post-Golgi vesicle-mediated transport, Golgi to plasma membrane transport, apoptosis, cell cycle, protein localization, cell death, regulation of cell death, programmed cell death, protein transport, vesicle-mediated t

Product Images



Immunohistochemical analysis of paraffin-embedded Cholangiocarcinoma. 1, Antibody was diluted at 1:200(4°,overnight). 2, Tris-EDTA,pH8.0 was used for antigen retrieval. 3,Secondary antibody was diluted at 1:200(room temperature, 30min).