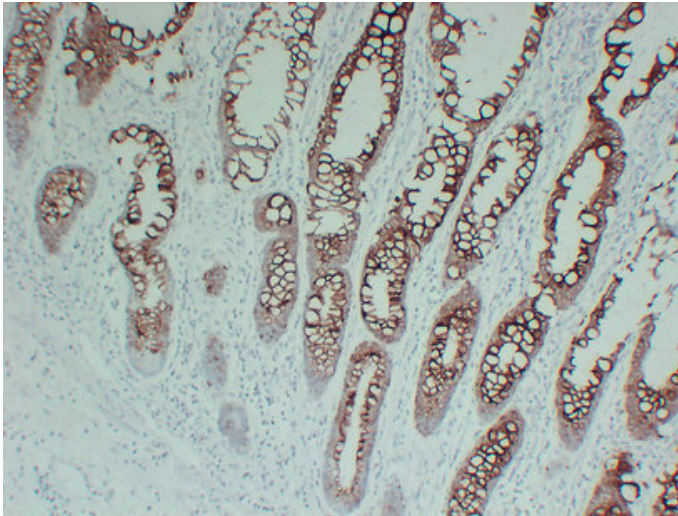


Cytokeratin 20 (4O2) mouse mAb

| | |
|---------------------|--|
| Catalog_no : | AM6037 |
| Applications : | IHC-p |
| Reactivity : | Human |
| Category : | 抗原抗体 |
| Size : | 50µl/100µl |
| Gene_name : | KRT20 |
| Protein_name : | Keratin, type I cytoskeletal 20 (Cytokeratin-20) (CK-20) (Keratin-20) (K20) (Protein IT) |
| Humanswissprot_no : | P35900 |
| Immunogen : | Synthesized peptide derived from human Cytokeratin 20 |
| Specificity : | This antibody detects endogenous levels of human Cytokeratin 20 |
| Formulation : | Liquid in PBS containing 50% glycerol, 0.5% BSA and 0.02% sodium azide. |
| Source : | Mouse/IgG2a, Kappa |
| Dilution : | IHC-p 1:100-500 |
| Purification : | The antibody was affinity-purified from mouse ascites by affinity-chromatography using specific immunogen. |
| Concentration : | 1 mg/ml |
| Storage_stability : | -20°C/1 year |
| Notes : | apoptosis, cytoskeleton organization, cell death, programmed cell death, death, regulation of protein localization,cellular response to stress, intermediate filament-based process, intermediate filament cytoskeleton organization,intermediate filament |

Product Images



Immunohistochemical analysis of paraffin-embedded Colon carcinoma. 1, Antibody was diluted at 1:200(4°,overnight). 2, Tris-EDTA,pH8.0 was used for antigen retrieval. 3,Secondary antibody was diluted at 1:200(room temperature, 30min).