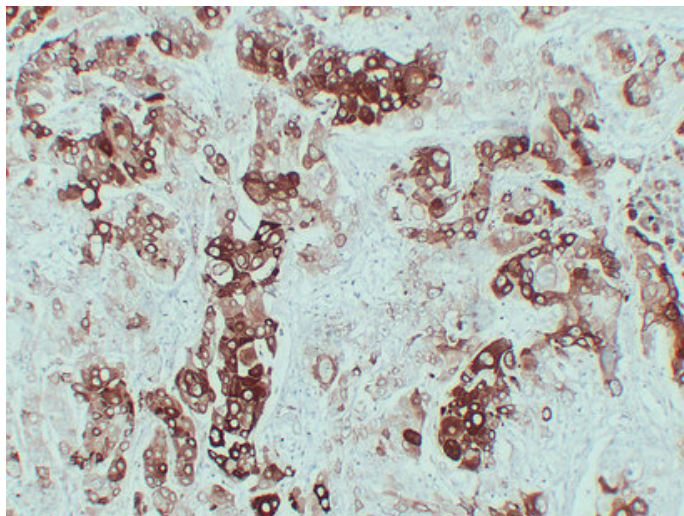


## Cytokeratin 6 (2G6) mouse mAb

Catalog_no :	AM6168
Applications :	IHC-p,WB
Reactivity :	Human
Category :	抗原抗体
Size :	50µl/100µl
Gene_name :	KRT6A K6A KRT6D
Protein_name :	Keratin, type II cytoskeletal 6A (Cytokeratin-6A) (CK-6A) (Cytokeratin-6D) (CK-6D) (Keratin-6A) (K6A) (Type-II keratin Kb6) (allergen Hom s 5)
Humanswissprot_no :	<a href="#">P02538</a>
Immunogen :	Synthesized peptide derived from human Cytokeratin 6
Specificity :	This antibody detects endogenous levels of human Cytokeratin 6
Formulation :	Liquid in PBS containing 50% glycerol, 0.5% BSA and 0.02% sodium azide.
Source :	Mouse IgG
Dilution :	IHC-p 1:100-500 , WB 1:500-2000
Purification :	The antibody was affinity-purified from mouse ascites by affinity-chromatography using specific immunogen.
Concentration :	1 mg/ml
Storage_stability :	-20°C/1 year
Notes :	ectoderm development, positive regulation of cell proliferation, regulation of cell proliferation,

## Product Images



Immunohistochemical analysis of paraffin-embedded Lung squamous cell carcinoma. 1, Antibody was diluted at 1:200(4°,overnight). 2, Tris-EDTA,pH8.0 was used for antigen retrieval. 3,Secondary antibody was diluted at 1:200(room temperature, 30min).