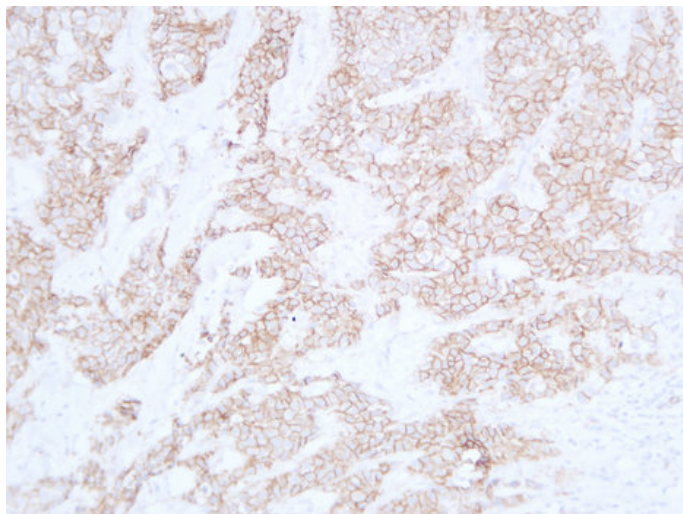


E-Cadherin (7G2) mouse mAb

Catalog_no :	AM6557
Applications :	IHC-p,WB
Reactivity :	Human
Category :	抗原抗体
Size :	50µl/100µl
Gene_name :	CDH1 CDHE UVO
Protein_name :	Cadherin-1 (CAM 120/80) (Epithelial cadherin) (E-cadherin) (Uvomorulin) (CD antigen CD324) [Cleaved into: E-Cad/CTF1; E-Cad/CTF2; E-Cad/CTF3]
Humanswissprot_no :	P12830
Immunogen :	Synthesized peptide derived from human E-Cadherin
Specificity :	This antibody detects endogenous levels of human E-Cadherin
Formulation :	Liquid in PBS containing 50% glycerol, 0.5% BSA and 0.02% sodium azide.
Source :	Mouse/IgG1, Kappa
Dilution :	IHC-p 1:100-500 , WB 1:500-2000
Purification :	The antibody was affinity-purified from mouse ascites by affinity-chromatography using specific immunogen.
Concentration :	1 mg/ml
Storage_stability :	-20°C/1 year
Notes :	in utero embryonic development, blastocyst development, blastocyst formation, trophoctodermal cell differentiation,protein complex assembly, cell adhesion, homophilic cell adhesion, synaptogenesis, response to toxin, embryonic development ending in b

Product Images



Immunohistochemical analysis of paraffin-embedded Breast carcinoma. 1, Antibody was diluted at 1:200(4°,overnight). 2, TRIS-EDTA of pH8.0 was used for antigen retrieval. 3,Secondary antibody was diluted at 1:200(room temperature, 30min).