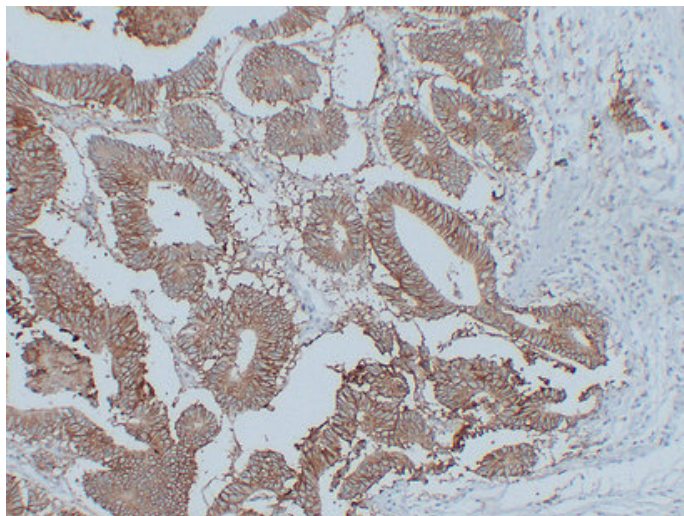


Ep-CAM (2X8) mouse mAb

Catalog_no :	AM6053
Applications :	IHC-p,WB,IF
Reactivity :	Human
Category :	抗原抗体
Size :	50µl/100µl
Gene_name :	EPCAM GA733-2 M1S2 M4S1 MIC18 TACSTD1 TROP1
Protein_name :	Epithelial cell adhesion molecule (Ep-CAM) (Adenocarcinoma-associated antigen) (Cell surface glycoprotein Trop-1) (Epithelial cell surface antigen) (Epithelial glycoprotein) (EGP) (Epithelial glycoprotein 314) (EGP314) (hEGP314) (KS 1/4 antigen) (KSA)
Humanswissprot_no :	P16422
Immunogen :	Synthesized peptide derived from human Ep-CAM
Specificity :	This antibody detects endogenous levels of human Ep-CAM
Formulation :	Liquid in PBS containing 50% glycerol, 0.5% BSA and 0.02% sodium azide.
Source :	Mouse IgG
Dilution :	IHC-p 1:100-500 , WB 1:500-2000 , IF 1:500-200
Purification :	The antibody was affinity-purified from mouse ascites by affinity-chromatography using specific immunogen.
Concentration :	1 mg/ml
Storage_stability :	-20°C/1 year

Product Images



Immunohistochemical analysis of paraffin-embedded Colon carcinoma. 1, Antibody was diluted at 1:200(4°,overnight). 2, Citric acid ,pH6.0 was used for antigen retrieval. 3,Secondary antibody was diluted at 1:200(room temperature, 30min).