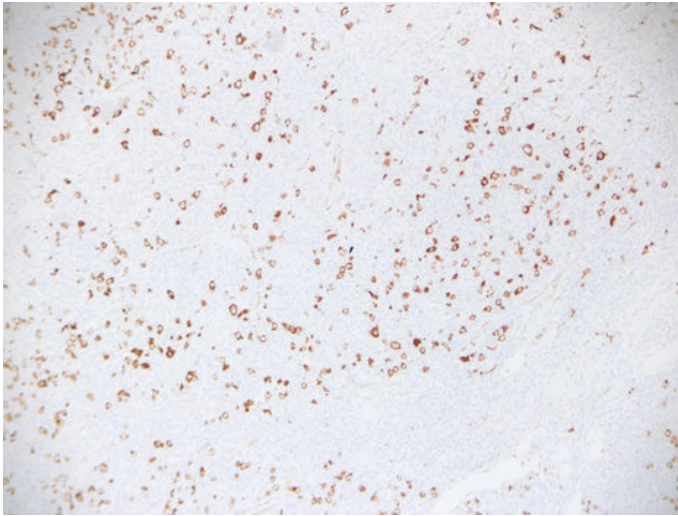


## Fascin (7R8) mouse mAb

Catalog_no :	AM6632
Applications :	IHC-p,WB,IF
Reactivity :	Human
Category :	抗原抗体
Size :	50µl/100µl
Gene_name :	FSCN1 FAN1 HSN SNL
Protein_name :	Fascin (55 kDa actin-bundling protein) (Singed-like protein) (p55)
Humanswissprot_no :	<a href="#">Q16658</a>
Immunogen :	Synthesized peptide derived from human Fascin
Specificity :	This antibody detects endogenous levels of human Fascin
Formulation :	Liquid in PBS containing 50% glycerol, 0.5% BSA and 0.02% sodium azide.
Source :	Mouse/IgG1, Kappa
Dilution :	IHC-p 1:100-500 , WB 1:500-2000 , IF 1:500-200
Purification :	The antibody was affinity-purified from mouse ascites by affinity-chromatography using specific immunogen.
Concentration :	1 mg/ml
Storage_stability :	-20°C/1 year
Notes :	cytoskeleton organization, actin filament organization, cell proliferation, actin filament-based process, actin cytoskeleton organization, actin filament bundle formation,

## Product Images



Immunohistochemical analysis of paraffin-embedded Hodgkin's Lymphoma. 1, Antibody was diluted at 1:200(4°,overnight). 2, TRIS-EDTA of pH8.0 was used for antigen retrieval. 3,Secondary antibody was diluted at 1:200(room temperature, 30min).