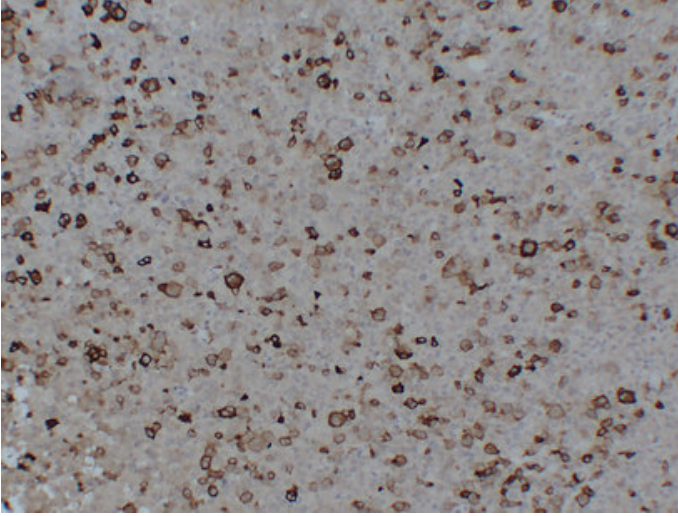


## Follicle-Stimulating Hormone (FSH) (5B7) mouse mAb

Catalog_no :	AM6402
Applications :	IHC-p
Reactivity :	Human
Category :	抗原抗体
Size :	50µl/100µl
Gene_name :	FSHB
Protein_name :	Follitropin subunit beta (Follicle-stimulating hormone beta subunit) (FSH-B) (FSH-beta) (Follitropin beta chain)
Humanswissprot_no :	<a href="#">P01225</a>
Immunogen :	Synthesized peptide derived from human Follicle-Stimulating Hormone (FSH)
Specificity :	This antibody detects endogenous levels of human Follicle-Stimulating Hormone (FSH)
Formulation :	Liquid in PBS containing 50% glycerol, 0.5% BSA and 0.02% sodium azide.
Source :	Mouse IgG
Dilution :	IHC-p 1:100-500
Purification :	The antibody was affinity-purified from mouse ascites by affinity-chromatography using specific immunogen.
Concentration :	1 mg/ml
Storage_stability :	-20°C/1 year
Notes :	ovarian follicle development, reproductive developmental process, steroid biosynthetic process, C21-steroid hormone biosynthetic process, progesterone biosynthetic process, cell surface receptor linked signal transduction, enzyme linked receptor prot

## Product Images



Immunohistochemical analysis of paraffin-embedded Hyperprolactinemia. 1, Antibody was diluted at 1:200(4°,overnight). 2, TRIS-EDTA of pH8.0 was used for antigen retrieval. 3,Secondary antibody was diluted at 1:200(room temperature, 30min).