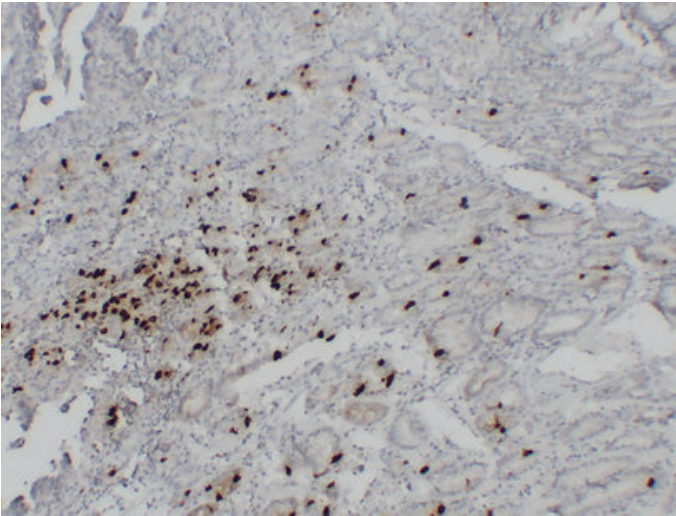


## Gastrin (6F5) mouse mAb

Catalog_no :	AM6181
Applications :	IHC-p
Reactivity :	Human
Category :	抗原抗体
Size :	50µl/100µl
Gene_name :	GAST GAS
Protein_name :	Gastrin [Cleaved into: Gastrin-71 (Gastrin component I); Gastrin-52 (G52); Big gastrin (Gastrin component II) (Gastrin-34) (G34); Gastrin (Gastrin component III) (Gastrin-17) (G17); Gastrin-14 (G14); Gastrin-6 (G6)]
Humanswissprot_no :	<a href="#">P01350</a>
Immunogen :	Synthesized peptide derived from human Gastrin
Specificity :	This antibody detects endogenous levels of human Gastrin
Formulation :	Liquid in PBS containing 50% glycerol, 0.5% BSA and 0.02% sodium azide.
Source :	Mouse/IgG1, Kappa
Dilution :	IHC-p 1:100-500
Purification :	The antibody was affinity-purified from mouse ascites by affinity-chromatography using specific immunogen.
Concentration :	1 mg/ml
Storage_stability :	-20°C/1 year
Notes :	cell surface receptor linked signal transduction, G-protein coupled receptor protein signaling pathway,

## Product Images



Immunohistochemical analysis of paraffin-embedded Gastric adenocarcinoma. 1, Antibody was diluted at 1:200(4°,overnight). 2, TRIS-EDTA of pH8.0 was used for antigen retrieval. 3,Secondary antibody was diluted at 1:200(room temperature, 30min).