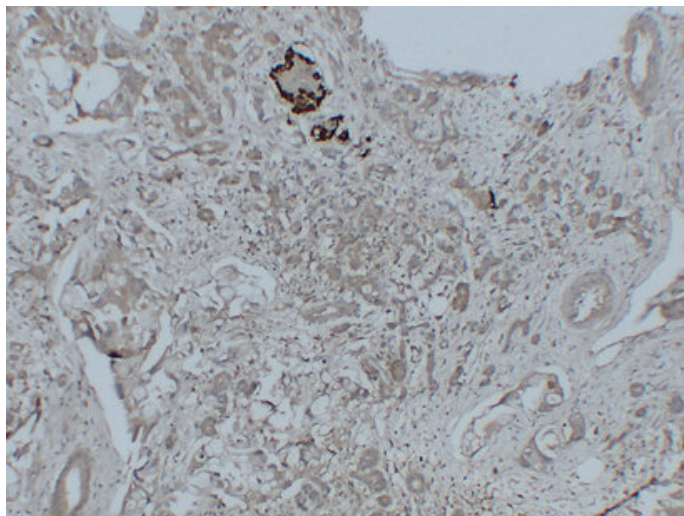


## Glucagon (1H10) mouse mAb

Catalog_no :	AM6062
Applications :	IHC-p
Reactivity :	Human
Category :	抗原抗体
Size :	50µl/100µl
Gene_name :	GCG
Protein_name :	Glucagon [Cleaved into: Glicentin; Glicentin-related polypeptide (GRPP); Oxyntomodulin (OXM) (OXY); Glucagon; Glucagon-like peptide 1 (GLP-1) (Incretin hormone); Glucagon-like peptide 1(7-37) (GLP-1(7-37)); Glucagon-like peptide 1(7-36) (GLP-1(7-36))
Humanswissprot_no :	<a href="#">P01275</a>
Immunogen :	Synthesized peptide derived from human Glucagon
Specificity :	This antibody detects endogenous levels of human Glucagon
Formulation :	Liquid in PBS containing 50% glycerol, 0.5% BSA and 0.02% sodium azide.
Source :	Mouse/IgG2b, Kappa
Dilution :	IHC-p 1:100-500
Purification :	The antibody was affinity-purified from mouse ascites by affinity-chromatography using specific immunogen.
Concentration :	1 mg/ml
Storage_stability :	-20°C/1 year
Notes :	regulation of peptide secretion, cell surface receptor linked signal transduction, G-protein coupled receptor protein signaling pathway, intracellular signaling cascade, behavior, feeding behavior, cell proliferation, response to endogenous stimulus,

## Product Images



Immunohistochemical analysis of paraffin-embedded Pancreatic carcinoma. 1, Antibody was diluted at 1:200(4°,overnight). 2, Citric acid ,pH6.0 was used for antigen retrieval. 3,Secondary antibody was diluted at 1:200(room temperature, 30min).