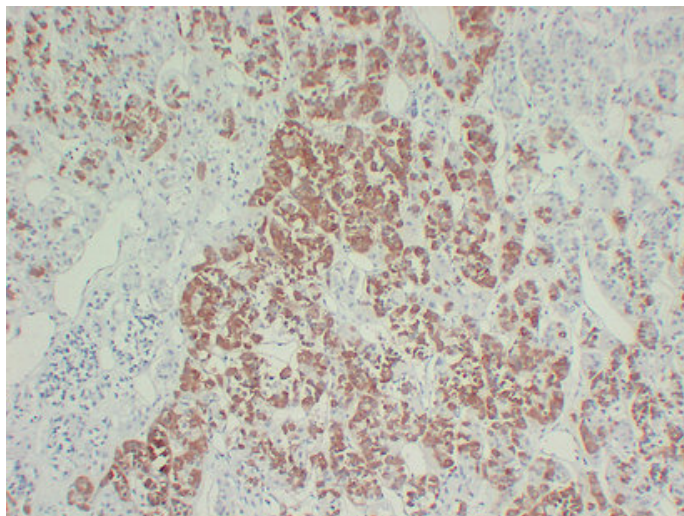


Growth Hormone(GH) (8X5) mouse mAb

Catalog_no :	AM6184
Applications :	IHC-p
Reactivity :	Human
Category :	抗原抗体
Size :	50μl/100μl
Gene_name :	GH1
Protein_name :	Somatotropin (Growth hormone) (GH) (GH-N) (Growth hormone 1) (Pituitary growth hormone)
Humanswissprot_no :	P01241
Immunogen :	Synthesized peptide derived from human Growth Hormone(GH)
Specificity :	This antibody detects endogenous levels of human Growth Hormone(GH)
Formulation :	Liquid in PBS containing 50% glycerol, 0.5% BSA and 0.02% sodium azide.
Source :	Mouse IgG
Dilution :	IHC-p 1:100-500
Purification :	The antibody was affinity-purified from mouse ascites by affinity-chromatography using specific immunogen.
Concentration :	1 mg/ml
Storage_stability :	-20°C/1 year
Notes :	regulation of protein amino acid phosphorylation, positive regulation of protein amino acid phosphorylation, cell surface receptor linked signal transduction, enzyme linked receptor protein signaling pathway, transmembrane receptor protein tyrosine k

Product Images



Immunohistochemical analysis of paraffin-embedded Hyperprolactinemia. 1, Antibody was diluted at 1:200(4°,overnight). 2, Tris-EDTA,pH8.0 was used for antigen retrieval. 3,Secondary antibody was diluted at 1:200(room temperature, 30min).