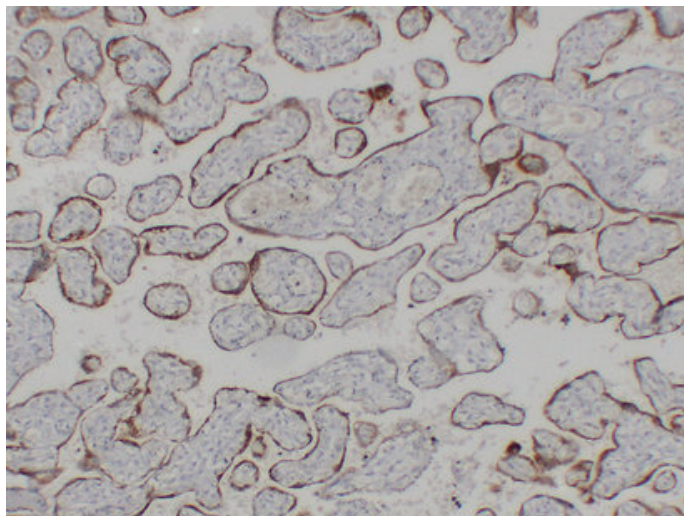




hCG β (2J1) mouse mAb

Catalog_no :	AM6185
Applications :	IHC-p
Reactivity :	Human
Category :	抗原抗体
Size :	50 μ l/100 μ l
Gene_name :	CGB CGB3; CGB5; CGB7; CGB8
Protein_name :	Choriogonadotropin subunit beta (CG-beta) (Chorionic gonadotrophin chain beta)
Humanswissprot_no :	P01233
Immunogen :	Synthesized peptide derived from human hCG β
Specificity :	This antibody detects endogenous levels of human hCG β
Formulation :	Liquid in PBS containing 50% glycerol, 0.5% BSA and 0.02% sodium azide.
Source :	Mouse IgG
Dilution :	IHC-p 1:100-500
Purification :	The antibody was affinity-purified from mouse ascites by affinity-chromatography using specific immunogen.
Concentration :	1 mg/ml
Storage_stability :	-20°C/1 year
Notes :	apoptosis, cell surface receptor linked signal transduction, G-protein coupled receptor protein signaling pathway, cell-cell signaling, gamete generation, female gamete generation, cell death, programmed cell death, death, sexual reproduction, multic

Product Images



Immunohistochemical analysis of paraffin-embedded Placenta. 1, Antibody was diluted at 1:200(4°,overnight).
2, Citric acid ,pH6.0 was used for antigen retrieval.
3,Secondary antibody was diluted at 1:200(room temperature, 30min).