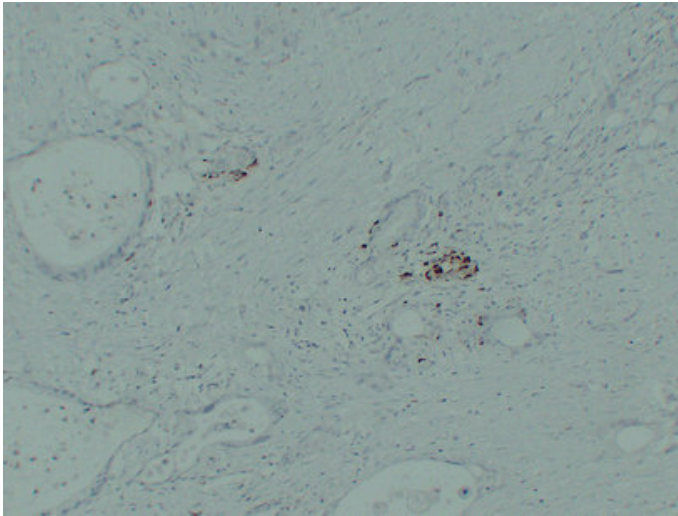


## IGF-2 (1A3) mouse mAb

Catalog_no :	AM6584
Applications :	IHC-p
Reactivity :	Human
Category :	抗原抗体
Size :	50µl/100µl
Gene_name :	IGF2 PP1446
Protein_name :	Insulin-like growth factor II (IGF-II) (Somatomedin-A) [Cleaved into: Insulin-like growth factor II; Insulin-like growth factor II Ala-25 Del; Preptin]
Humanswissprot_no :	<a href="#">P01344</a>
Immunogen :	Synthesized peptide derived from human IGF-2
Specificity :	This antibody detects endogenous levels of human IGF-2
Formulation :	Liquid in PBS containing 50% glycerol, 0.5% BSA and 0.02% sodium azide.
Source :	Mouse/IgG2b, Kappa
Dilution :	IHC-p 1:100-500
Purification :	The antibody was affinity-purified from mouse ascites by affinity-chromatography using specific immunogen.
Concentration :	1 mg/ml
Storage_stability :	-20°C/1 year
Notes :	MAPKKK cascade, skeletal system development, ossification, regulation of cell growth, osteoblast differentiation, cell activation, regulation of cytokine production, regulation of protein amino acid phosphorylation, positive regulation of protein ami

## Product Images



Immunohistochemical analysis of paraffin-embedded Pancreatic carcinoma. 1, Antibody was diluted at 1:200(4°,overnight). 2, TRIS-EDTA of pH8.0 was used for antigen retrieval. 3,Secondary antibody was diluted at 1:200(room temperature, 30min).