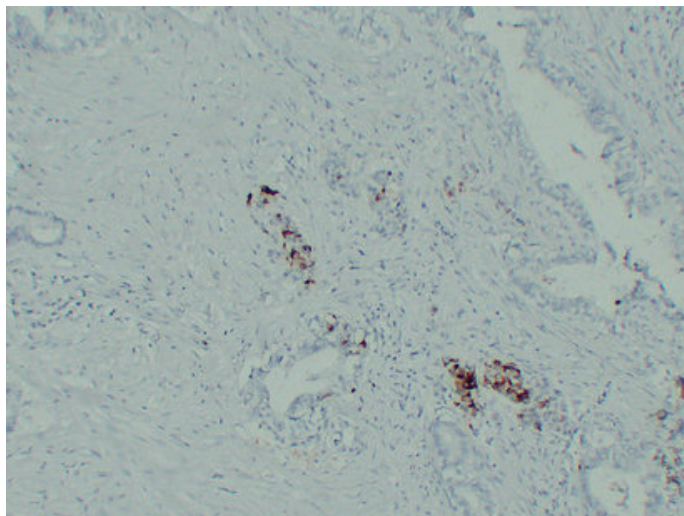


IGF-2 (7C10) mouse mAb

| | |
|---------------------|--|
| Catalog_no : | AM6543 |
| Applications : | IHC-p |
| Reactivity : | Human |
| Category : | 抗原抗体 |
| Size : | 50µl/100µl |
| Gene_name : | IGF2 PP1446 |
| Protein_name : | Insulin-like growth factor II (IGF-II) (Somatomedin-A) [Cleaved into: Insulin-like growth factor II; Insulin-like growth factor II Ala-25 Del; Preptin] |
| Humanswissprot_no : | P01344 |
| Immunogen : | Synthesized peptide derived from human IGF-2 |
| Specificity : | This antibody detects endogenous levels of human IGF-2 |
| Formulation : | Liquid in PBS containing 50% glycerol, 0.5% BSA and 0.02% sodium azide. |
| Source : | Mouse/IgG2b, Kappa |
| Dilution : | IHC-p 1:100-500 |
| Purification : | The antibody was affinity-purified from mouse ascites by affinity-chromatography using specific immunogen. |
| Concentration : | 1 mg/ml |
| Storage_stability : | -20°C/1 year |
| Notes : | MAPKKK cascade, skeletal system development, ossification, regulation of cell growth, osteoblast differentiation, cell activation, regulation of cytokine production, regulation of protein amino acid phosphorylation, positive regulation of protein ami |

Product Images



Immunohistochemical analysis of paraffin-embedded Pancreatic carcinoma. 1, Antibody was diluted at 1:200(4°,overnight). 2, TRIS-EDTA of pH8.0 was used for antigen retrieval. 3,Secondary antibody was diluted at 1:200(room temperature, 30min).