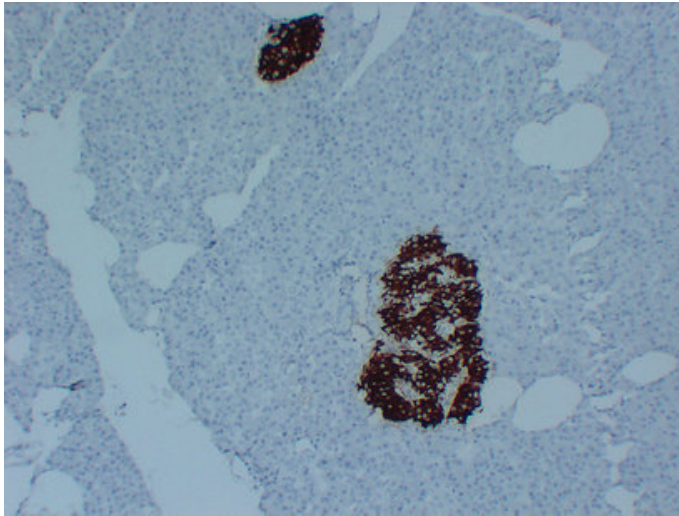


## Insulin (7Y5) mouse mAb

Catalog_no :	AM6121
Applications :	IHC-p
Reactivity :	Human
Category :	抗原抗体
Size :	50µl/100µl
Gene_name :	INS
Protein_name :	Insulin [Cleaved into: Insulin B chain; Insulin A chain]
Humanswissprot_no :	<a href="#">P01308</a>
Immunogen :	Synthesized peptide derived from human Insulin
Specificity :	This antibody detects endogenous levels of human Insulin
Formulation :	Liquid in PBS containing 50% glycerol, 0.5% BSA and 0.02% sodium azide.
Source :	Mouse/IgG2b, Kappa
Dilution :	IHC-p 1:100-500
Purification :	The antibody was affinity-purified from mouse ascites by affinity-chromatography using specific immunogen.
Concentration :	1 mg/ml
Storage_stability :	-20°C/1 year
Notes :	MAPKKK cascade, skeletal system development, ossification, regulation of cell growth, osteoblast differentiation, cell activation, regulation of cytokine production, regulation of protein amino acid phosphorylation, positive regulation of protein ami

## Product Images



Immunohistochemical analysis of paraffin-embedded Pancreas. 1, Antibody was diluted at 1:200(4°,overnight). 2, Citric acid ,pH6.0 was used for antigen retrieval. 3,Secondary antibody was diluted at 1:200(room temperature, 30min).