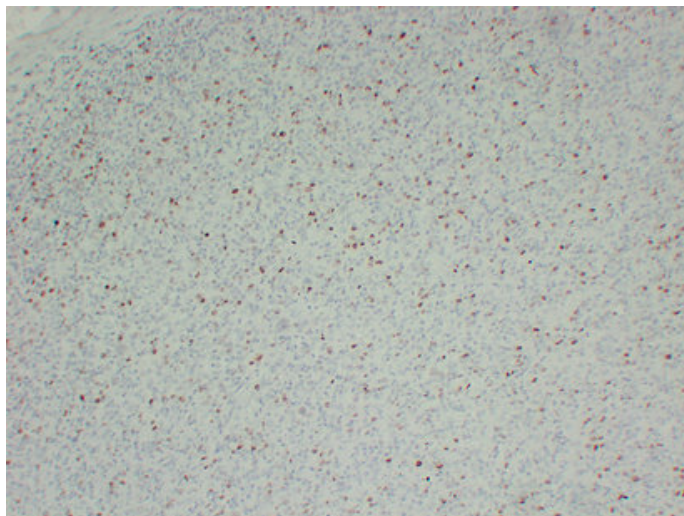


Ki-67 (9J7) mouse mAb

Catalog_no :	AM6189
Applications :	IHC-p,IF
Reactivity :	Human
Category :	抗原抗体
Size :	50µl/100µl
Gene_name :	MKI67
Protein_name :	Antigen KI-67
Humanswissprot_no :	P46013
Immunogen :	Synthesized peptide derived from human Ki-67
Specificity :	This antibody detects endogenous levels of human Ki-67
Formulation :	Liquid in PBS containing 50% glycerol, 0.5% BSA and 0.02% sodium azide.
Source :	Mouse/IgG1, Kappa
Dilution :	IHC-p 1:100-500 , IF 1:500-200
Purification :	The antibody was affinity-purified from mouse ascites by affinity-chromatography using specific immunogen.
Concentration :	1 mg/ml
Storage_stability :	-20°C/1 year
Notes :	M phase, cell cycle, meiosis, cell proliferation, cell cycle process, cell cycle phase, meiotic cell cycle, M phase of meiotic cell cycle,

Product Images



Immunohistochemical analysis of paraffin-embedded Classical Hodgkin's lymphoma. 1, Antibody was diluted at 1:200(4°,overnight). 2, Tris-EDTA,pH8.0 was used for antigen retrieval. 3,Secondary antibody was diluted at 1:200(room temperature, 30min).