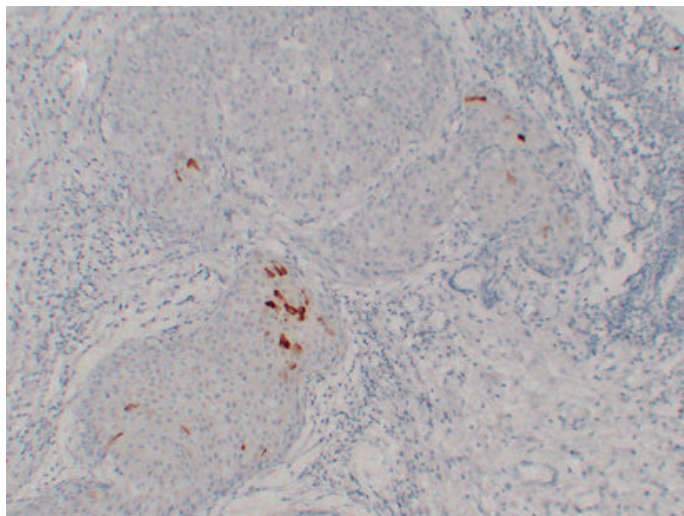


Mammaglobin (4I8) mouse mAb

Catalog_no :	AM6193
Applications :	IHC-p
Reactivity :	Human
Category :	抗原抗体
Size :	50µl/100µl
Gene_name :	SCGB2A2 MGB1 UGB2
Protein_name :	Mammaglobin-A (Mammaglobin-1) (Secretoglobin family 2A member 2)
Humanswissprot_no :	Q13296
Immunogen :	Synthesized peptide derived from human Mammaglobin
Specificity :	This antibody detects endogenous levels of human Mammaglobin
Formulation :	Liquid in PBS containing 50% glycerol, 0.5% BSA and 0.02% sodium azide.
Source :	Mouse/IgG1, Kappa
Dilution :	IHC-p 1:100-500
Purification :	The antibody was affinity-purified from mouse ascites by affinity-chromatography using specific immunogen.
Concentration :	1 mg/ml
Storage_stability :	-20°C/1 year

Product Images



Immunohistochemical analysis of paraffin-embedded Breast carcinoma. 1, Antibody was diluted at 1:200(4°,overnight). 2, Tris-EDTA,pH8.0 was used for antigen retrieval. 3,Secondary antibody was diluted at 1:200(room temperature, 30min).