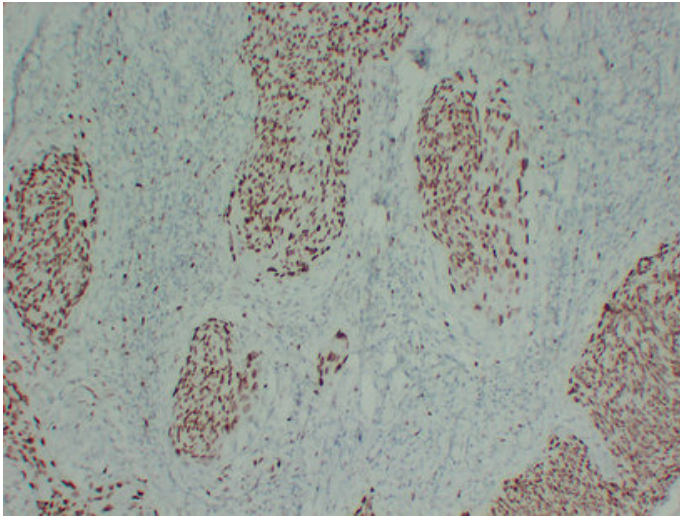


## MCM2 (9B5) mouse mAb

Catalog_no :	AM6642
Applications :	IHC-p,WB
Reactivity :	Human
Category :	抗原抗体
Size :	50µl/100µl
Gene_name :	MCM2 BM28 CCNL1 CDCL1 KIAA0030
Protein_name :	DNA replication licensing factor MCM2 (EC 3.6.4.12) (Minichromosome maintenance protein 2 homolog) (Nuclear protein BM28)
Humanswissprot_no :	<a href="#">P49736</a>
Immunogen :	Synthesized peptide derived from human MCM2
Specificity :	This antibody detects endogenous levels of human MCM2
Formulation :	Liquid in PBS containing 50% glycerol, 0.5% BSA and 0.02% sodium azide.
Source :	Mouse/IgG1, Kappa
Dilution :	IHC-p 1:100-500 , WB 1:500-2000
Purification :	The antibody was affinity-purified from mouse ascites by affinity-chromatography using specific immunogen.
Concentration :	1 mg/ml
Storage_stability :	-20°C/1 year
Notes :	DNA metabolic process, DNA replication, DNA-dependent DNA replication, DNA unwinding during replication, DNA replication initiation, DNA packaging, chromatin organization, chromatin assembly or disassembly, nucleosome assembly, transcription, cell cy

## Product Images



Immunohistochemical analysis of paraffin-embedded Cervical squamous carcinoma. 1, Antibody was diluted at 1:200(4°,overnight). 2, TRIS-EDTA of pH8.0 was used for antigen retrieval. 3,Secondary antibody was diluted at 1:200(room temperature, 30min).