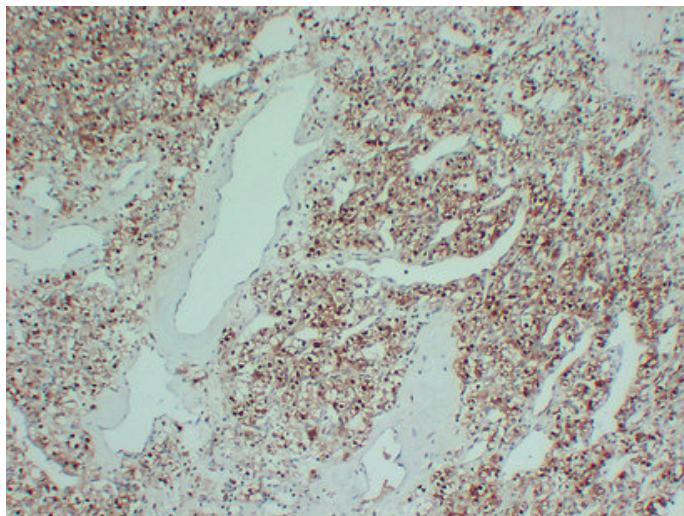




## S100A1 (4X7) mouse mAb

Catalog_no :	AM6494
Applications :	IHC-p
Reactivity :	Human
Category :	抗原抗体
Size :	50µl/100µl
Gene_name :	S100A1 S100A
Protein_name :	Protein S100-A1 (S-100 protein alpha chain) (S-100 protein subunit alpha) (S100 calcium-binding protein A1)
Humanswissprot_no :	<a href="#">P23297</a>
Immunogen :	Synthesized peptide derived from human S100A1
Specificity :	This antibody detects endogenous levels of human S100A1
Formulation :	Liquid in PBS containing 50% glycerol, 0.5% BSA and 0.02% sodium azide.
Source :	Mouse/IgG1, Kappa
Dilution :	IHC-p 1:100-500
Purification :	The antibody was affinity-purified from mouse ascites by affinity-chromatography using specific immunogen.
Concentration :	1 mg/ml
Storage_stability :	-20°C/1 year
Notes :	negative regulation of transcription from RNA polymerase II promoter, regulation of transcription, DNA-dependent,regulation of transcription from RNA polymerase II promoter, intracellular signaling cascade, regulation of heart contraction, negative r

## Product Images



Immunohistochemical analysis of paraffin-embedded Renal clear cell carcinoma. 1, Antibody was diluted at 1:200(4°,overnight). 2, TRIS-EDTA of pH8.0 was used for antigen retrieval. 3,Secondary antibody was diluted at 1:200(room temperature, 30min).