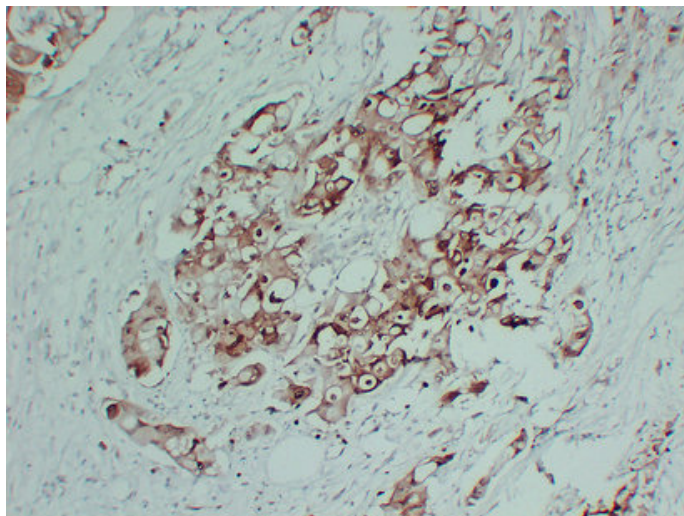


## S100P (9C4) mouse mAb

Catalog_no :	AM6652
Applications :	IHC-p
Reactivity :	Human
Category :	抗原抗体
Size :	50µl/100µl
Gene_name :	S100P S100E
Protein_name :	Protein S100-P (Protein S100-E) (S100 calcium-binding protein P)
Humanswissprot_no :	<a href="#">P25815</a>
Immunogen :	Synthesized peptide derived from human S100P
Specificity :	This antibody detects endogenous levels of human S100P
Formulation :	Liquid in PBS containing 50% glycerol, 0.5% BSA and 0.02% sodium azide.
Source :	Mouse/IgG2a, Kappa
Dilution :	IHC-p 1:100-500
Purification :	The antibody was affinity-purified from mouse ascites by affinity-chromatography using specific immunogen.
Concentration :	1 mg/ml
Storage_stability :	-20°C/1 year
Notes :	cell motion, behavior, learning or memory, memory, cell migration, regulation of neurological system process, endothelial cell migration, regulation of system process, regulation of synaptic plasticity, regulation of neuronal synaptic plasticity, cell

## Product Images



Immunohistochemical analysis of paraffin-embedded Pancreatic carcinoma. 1, Antibody was diluted at 1:200(4°,overnight). 2, TRIS-EDTA of pH8.0 was used for antigen retrieval. 3,Secondary antibody was diluted at 1:200(room temperature, 30min).