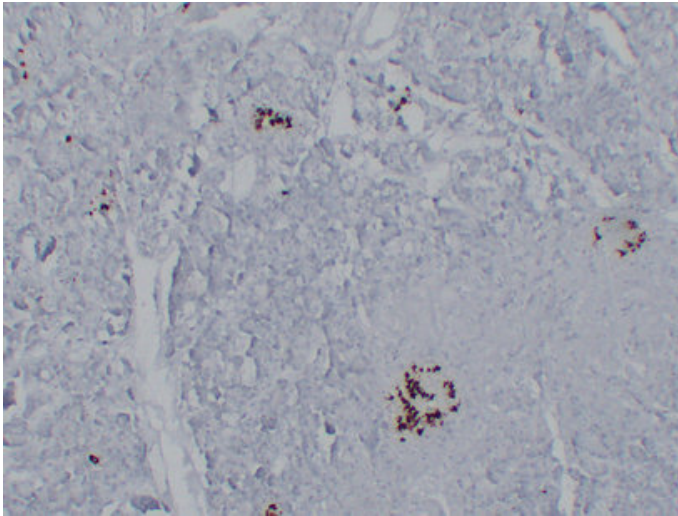


Somatostatin (9L6) mouse mAb

| | |
|---------------------|---|
| Catalog_no : | AM6653 |
| Applications : | IHC-p |
| Reactivity : | Human |
| Category : | 抗原抗体 |
| Size : | 50µl/100µl |
| Gene_name : | SST |
| Protein_name : | Somatostatin (Growth hormone release-inhibiting factor) [Cleaved into: Somatostatin-28; Somatostatin-14] |
| Humanswissprot_no : | P61278 |
| Immunogen : | Synthesized peptide derived from human Somatostatin |
| Specificity : | This antibody detects endogenous levels of human Somatostatin |
| Formulation : | Liquid in PBS containing 50% glycerol, 0.5% BSA and 0.02% sodium azide. |
| Source : | Mouse IgG |
| Dilution : | IHC-p 1:100-500 |
| Purification : | The antibody was affinity-purified from mouse ascites by affinity-chromatography using specific immunogen. |
| Concentration : | 1 mg/ml |
| Storage_stability : | -20°C/1 year |
| Notes : | response to acid, induction of apoptosis, response to osmotic stress, hyperosmotic response, cell surface receptor linked signal transduction, G-protein coupled receptor protein signaling pathway, cell-cell signaling, synaptic transmission, response |

Product Images



Immunohistochemical analysis of paraffin-embedded Pancreas. 1, Antibody was diluted at 1:200(4°,overnight). 2, Citrate buffer of pH6.0 was used for antigen retrieval. 3,Secondary antibody was diluted at 1:200(room temperature, 30min).