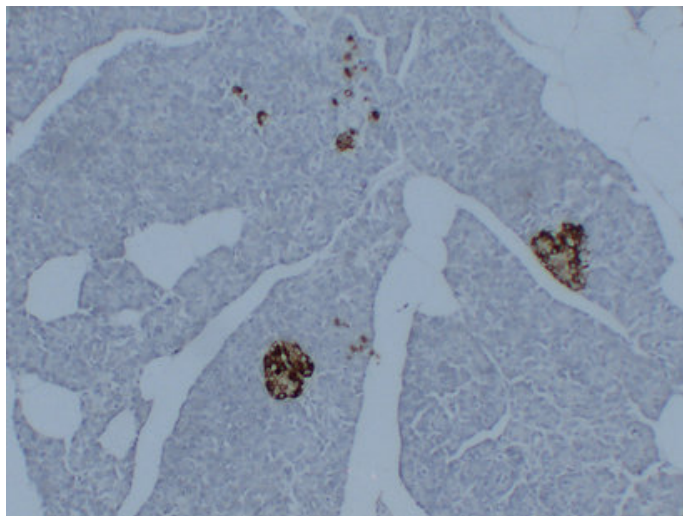




## Synaptophysin (1U6) mouse mAb

Catalog_no :	AM6098
Applications :	IHC-p
Reactivity :	Human
Category :	抗原抗体
Size :	50μl/100μl
Gene_name :	SYP
Protein_name :	Synaptophysin (Major synaptic vesicle protein p38)
Humanswissprot_no :	<a href="#">P08247</a>
Immunogen :	Synthesized peptide derived from human Synaptophysin
Specificity :	This antibody detects endogenous levels of human Synaptophysin
Formulation :	Liquid in PBS containing 50% glycerol, 0.5% BSA and 0.02% sodium azide.
Source :	Mouse/IgG2a, Kappa
Dilution :	IHC-p 1:100-500
Purification :	The antibody was affinity-purified from mouse ascites by affinity-chromatography using specific immunogen.
Concentration :	1 mg/ml
Storage_stability :	-20°C/1 year
Notes :	endocytosis, endomembrane organization, membrane invagination, membrane organization, vesicle organization, synaptic vesicle maturation, vesicle-mediated transport, developmental maturation, regulation of neurological system process, regulation of sys

## Product Images



Immunohistochemical analysis of paraffin-embedded Pancreas. 1, Antibody was diluted at 1:200(4°,overnight). 2, Tris-EDTA,pH8.0 was used for antigen retrieval. 3,Secondary antibody was diluted at 1:200(room temperature, 30min).