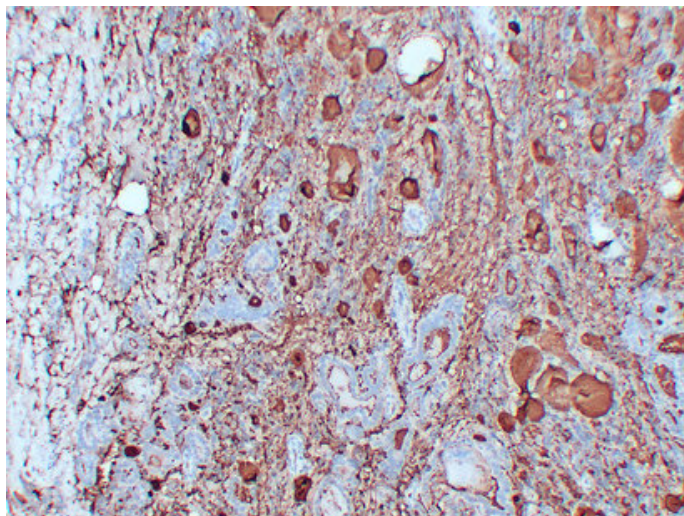




Thyroglobulin (6N2) mouse mAb

| | |
|---------------------|-------------------------------------------------------------------------------------------------------------------------------------------------------------------------------------------------------------------------------------------------------------|
| Catalog_no : | AM6654 |
| Applications : | IHC-p |
| Reactivity : | Human |
| Category : | 抗原抗体 |
| Size : | 50μl/100μl |
| Gene_name : | TG |
| Protein_name : | Thyroglobulin (Tg) |
| Humanswissprot_no : | P01266 |
| Immunogen : | Synthesized peptide derived from human Thyroglobulin |
| Specificity : | This antibody detects endogenous levels of human Thyroglobulin |
| Formulation : | Liquid in PBS containing 50% glycerol, 0.5% BSA and 0.02% sodium azide. |
| Source : | Mouse/IgG1, Kappa |
| Dilution : | IHC-p 1:100-500 |
| Purification : | The antibody was affinity-purified from mouse ascites by affinity-chromatography using specific immunogen. |
| Concentration : | 1 mg/ml |
| Storage_stability : | -20°C/1 year |
| Notes : | response to molecule of bacterial origin, response to pH, response to bacterium, response to abiotic stimulus, response to organic substance, regulation of hormone levels, vesicle-mediated transport, response to lipopolysaccharide, hormone metabolic p |

Product Images



Immunohistochemical analysis of paraffin-embedded Papillary thyroid carcinoma. 1, Antibody was diluted at 1:200(4°,overnight). 2, Citrate buffer of pH6.0 was used for antigen retrieval. 3,Secondary antibody was diluted at 1:200(room temperature, 30min).