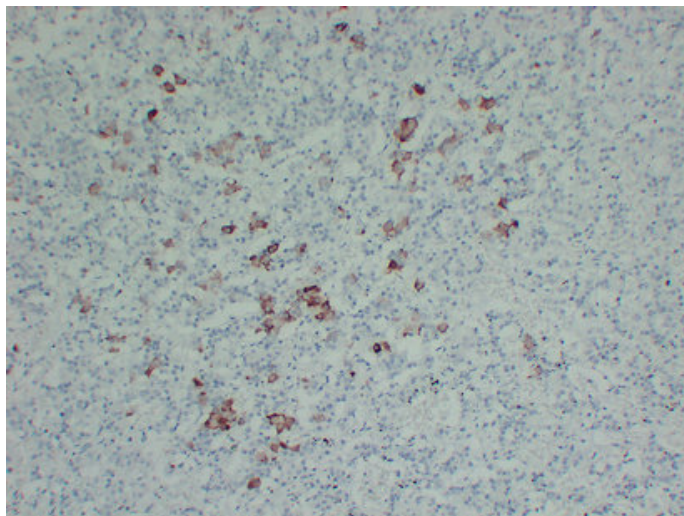


## Thyroid-Stimulating Hormone(TSH) (1H1) mouse mAb

Catalog_no :	AM6548
Applications :	IHC-p
Reactivity :	Human
Category :	抗原抗体
Size :	50μl/100μl
Gene_name :	TSHB
Protein_name :	Thyrotropin subunit beta (Thyroid-stimulating hormone subunit beta) (TSH-B) (TSH-beta) (Thyrotropin beta chain) (Thyrotropin alfa)
Humanswissprot_no :	<a href="#">P01222</a>
Immunogen :	Synthesized peptide derived from human Thyroid-Stimulating Hormone(TSH)
Specificity :	This antibody detects endogenous levels of human Thyroid-Stimulating Hormone(TSH)
Formulation :	Liquid in PBS containing 50% glycerol, 0.5% BSA and 0.02% sodium azide.
Source :	Mouse IgG
Dilution :	IHC-p 1:100-500
Purification :	The antibody was affinity-purified from mouse ascites by affinity-chromatography using specific immunogen.
Concentration :	1 mg/ml
Storage_stability :	-20°C/1 year
Notes :	cell surface receptor linked signal transduction, G-protein coupled receptor protein signaling pathway, cell-cell signaling, response to nutrient, response to endogenous stimulus, response to hormone stimulus, response to extracellular stimulus, resp

## Product Images



Immunohistochemical analysis of paraffin-embedded Pituitary adenocarcinoma. 1, Antibody was diluted at 1:200(4°,overnight). 2, Citric acid ,pH6.0 was used for antigen retrieval. 3,Secondary antibody was diluted at 1:200(room temperature, 30min).