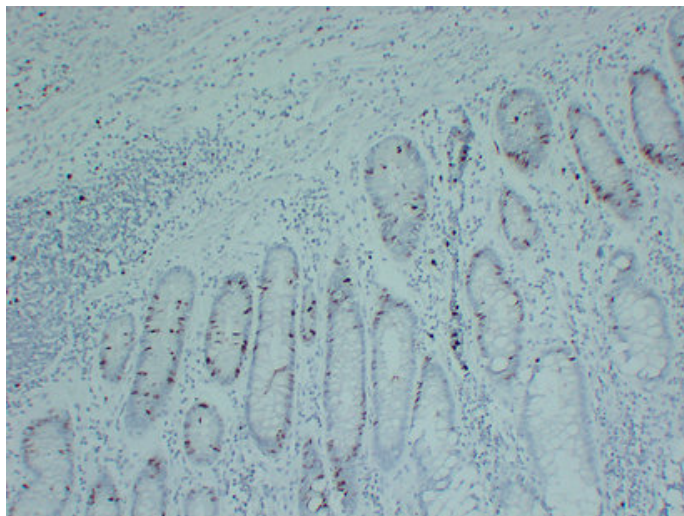


Topoisomerase II $\alpha$  (5Q3) mouse mAb

Catalog_no :	AM6594
Applications :	IHC-p,WB,IF
Reactivity :	Human
Category :	抗原抗体
Size :	50 $\mu$ l/100 $\mu$ l
Gene_name :	TOP2A TOP2
Protein_name :	DNA topoisomerase 2-alpha (EC 5.99.1.3) (DNA topoisomerase II, alpha isozyme)
Humanswissprot_no :	<a href="#">P11388</a>
Immunogen :	Synthesized peptide derived from human Topoisomerase II $\alpha$
Specificity :	This antibody detects endogenous levels of human Topoisomerase II $\alpha$
Formulation :	Liquid in PBS containing 50% glycerol, 0.5% BSA and 0.02% sodium azide.
Source :	Mouse/IgG1, Kappa
Dilution :	IHC-p 1:100-500 , WB 1:500-2000 , IF 1:500-200
Purification :	The antibody was affinity-purified from mouse ascites by affinity-chromatography using specific immunogen.
Concentration :	1 mg/ml
Storage_stability :	-20°C/1 year
Notes :	DNA metabolic process, DNA replication, DNA topological change, DNA ligation, DNA repair, DNA packaging, apoptosis,response to DNA damage stimulus, nucleus organization, chromosome segregation, intracellular signaling cascade, cell death, regulation

## Product Images



Immunohistochemical analysis of paraffin-embedded Colon carcinoma. 1, Antibody was diluted at 1:200(4°,overnight). 2, TRIS-EDTA of pH8.0 was used for antigen retrieval. 3,Secondary antibody was diluted at 1:200(room temperature, 30min).