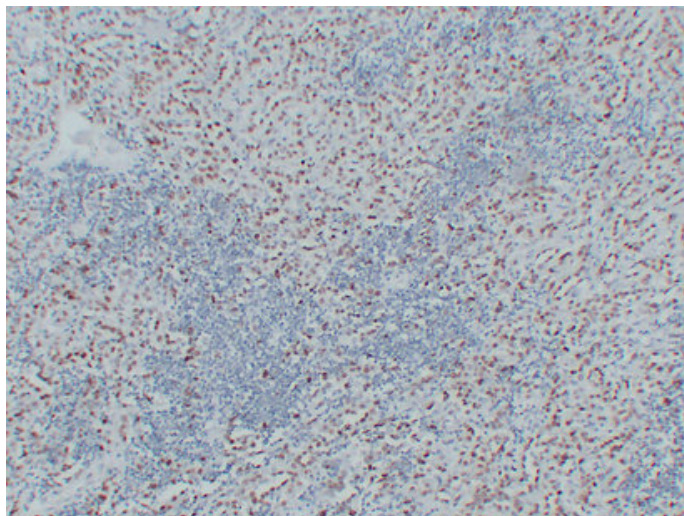




## Wilms' Tumor 1(WT1) (6T3) mouse mAb

Catalog_no :	AM6533
Applications :	IHC-p
Reactivity :	Human
Category :	抗原抗体
Size :	50μl/100μl
Gene_name :	WT1
Protein_name :	Wilms tumor protein (WT33)
Humanswissprot_no :	<a href="#">P19544</a>
Immunogen :	Synthesized peptide derived from human Wilms' Tumor 1(WT1)
Specificity :	This antibody detects endogenous levels of human Wilms' Tumor 1(WT1)
Formulation :	Liquid in PBS containing 50% glycerol, 0.5% BSA and 0.02% sodium azide.
Source :	Mouse/IgG2b, Kappa
Dilution :	IHC-p 1:100-500
Purification :	The antibody was affinity-purified from mouse ascites by affinity-chromatography using specific immunogen.
Concentration :	1 mg/ml
Storage_stability :	-20°C/1 year
Notes :	negative regulation of transcription from RNA polymerase II promoter, blood vessel development, vasculogenesis, eye development, urogenital system development, metanephros development, kidney development, mesonephros development, vasculature developm

## Product Images



Immunohistochemical analysis of paraffin-embedded Mesothelioma. 1, Antibody was diluted at 1:200(4°,overnight). 2, Tris-EDTA,pH8.0 was used for antigen retrieval. 3,Secondary antibody was diluted at 1:200(room temperature, 30min).