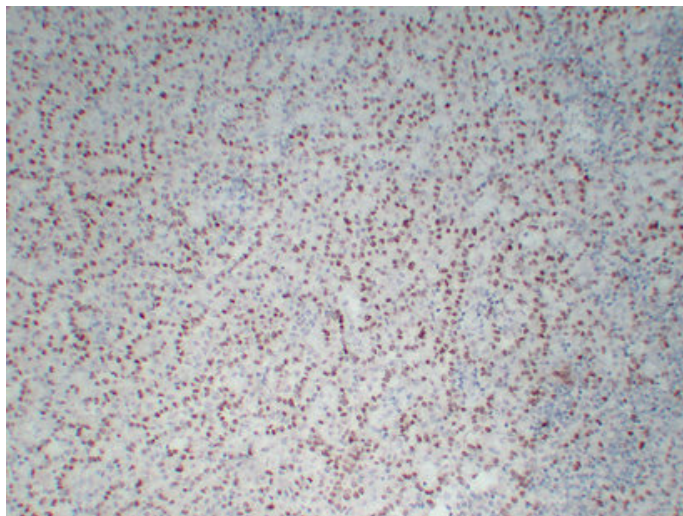


Wilms' Tumor 1(WT1) (3K4) mouse mAb

Catalog_no :	AM6140
Applications :	IHC-p,WB
Reactivity :	Human
Category :	抗原抗体
Size :	50µl/100µl
Gene_name :	WT1
Protein_name :	Wilms tumor protein (WT33)
Humanswissprot_no :	P19544
Immunogen :	Synthesized peptide derived from human Wilms' Tumor 1(WT1)
Specificity :	This antibody detects endogenous levels of human Wilms' Tumor 1(WT1)
Formulation :	Liquid in PBS containing 50% glycerol, 0.5% BSA and 0.02% sodium azide.
Source :	Mouse/IgG1, Kappa
Dilution :	IHC-p 1:100-500 , WB 1:500-2000
Purification :	The antibody was affinity-purified from mouse ascites by affinity-chromatography using specific immunogen.
Concentration :	1 mg/ml
Storage_stability :	-20°C/1 year
Notes :	negative regulation of transcription from RNA polymerase II promoter, blood vessel development, vasculogenesis, eye development, urogenital system development, metanephros development, kidney development, mesonephros development, vasculature developm

Product Images



Immunohistochemical analysis of paraffin-embedded Mesothelioma. 1, Antibody was diluted at 1:200(4°,overnight). 2, TRIS-EDTA of pH8.0 was used for antigen retrieval. 3,Secondary antibody was diluted at 1:200(room temperature, 30min).