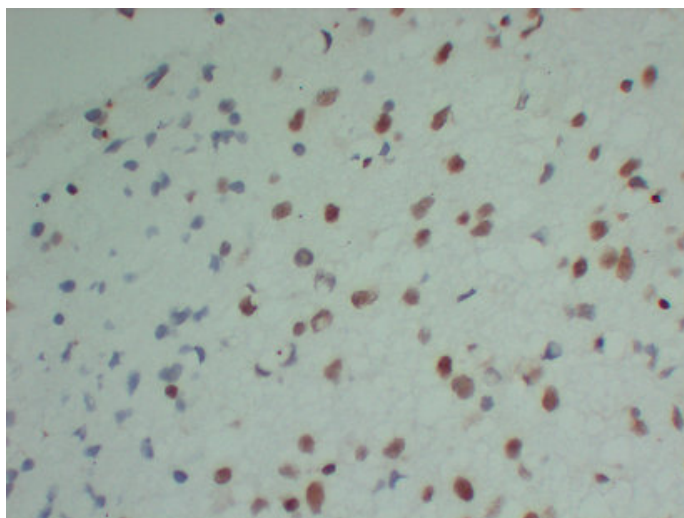




## INI-1 (5Q2) mouse mAb

Catalog_no :	AM6662
Applications :	IHC-p,WB
Reactivity :	Human
Category :	抗原抗体
Size :	50µl/100µl
Gene_name :	SMARCB1 BAF47 INI1 SNF5L1
Protein_name :	INI-1
Humanswissprot_no :	<a href="#">Q12824</a>
Immunogen :	Synthesized peptide derived from human INI-1
Specificity :	This antibody detects endogenous levels of human INI-1
Formulation :	Liquid in PBS containing 50% glycerol, 0.5% BSA and 0.02% sodium azide.
Source :	Mouse IgG
Dilution :	IHC-p 1:100-500 , WB 1:500-2000
Purification :	The antibody was affinity-purified from mouse ascites by affinity-chromatography using specific immunogen.
Concentration :	1 mg/ml
Storage_stability :	-20°C/1 year
Notes :	DNA metabolic process, chromatin organization, chromatin remodeling, transcription, regulation of transcription, DNA-dependent, regulation of transcription from RNA polymerase II promoter, cell cycle, positive regulation of biosynthetic process, regu

## Product Images



Immunohistochemical analysis of paraffin-embedded Astrocytoma-high magnification. 1, Antibody was diluted at 1:200(4°,overnight). 2, Citrate buffer of pH6.0 was used for antigen retrieval. 3,Secondary antibody was diluted at 1:200(room temperature, 30min).