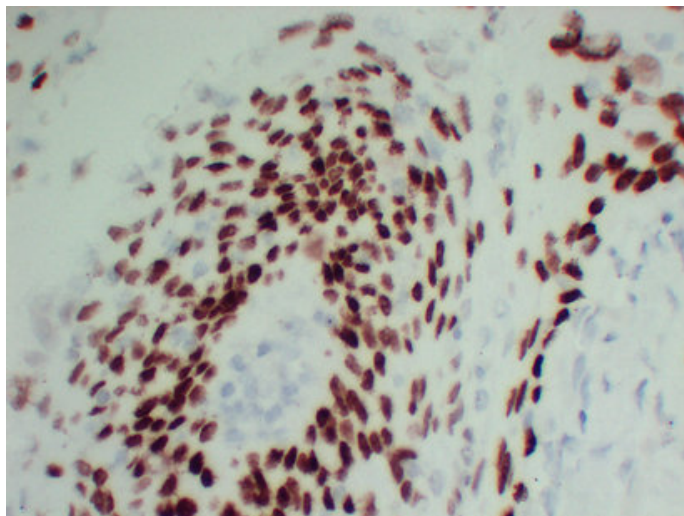




p40 (9N9) mouse mAb

| | |
|---------------------|------------------------------------------------------------------------------------------------------------------------------------------------------------------------------------------------------------------------------------------------------------|
| Catalog_no : | AM6665 |
| Applications : | IHC-p,WB |
| Reactivity : | Human |
| Category : | 抗原抗体 |
| Size : | 50μl/100μl |
| Gene_name : | TP63 KET P63 P73H P73L TP73L |
| Protein_name : | p40 |
| Humanswissprot_no : | Q9H3D4 |
| Immunogen : | Synthesized peptide derived from human p40 |
| Specificity : | This antibody detects endogenous levels of human p40 |
| Formulation : | Liquid in PBS containing 50% glycerol, 0.5% BSA and 0.02% sodium azide. |
| Source : | Mouse/IgG1, Kappa |
| Dilution : | IHC-p 1:100-500 , WB 1:500-2000 |
| Purification : | The antibody was affinity-purified from mouse ascites by affinity-chromatography using specific immunogen. |
| Concentration : | 1 mg/ml |
| Storage_stability : | -20°C/1 year |
| Notes : | negative regulation of transcription from RNA polymerase II promoter, replicative cell aging, skeletal system development, regulation of cell growth, urogenital system development, establishment of planar polarity,morphogenesis of a polarized epithel |

Product Images



Immunohistochemical analysis of paraffin-embedded Cervical squamous cell carcinoma-high magnification. 1, Antibody was diluted at 1:200(4°,overnight). 2, Citrate buffer of pH6.0 was used for antigen retrieval. 3,Secondary antibody was diluted at 1:200(room temperature, 30min).