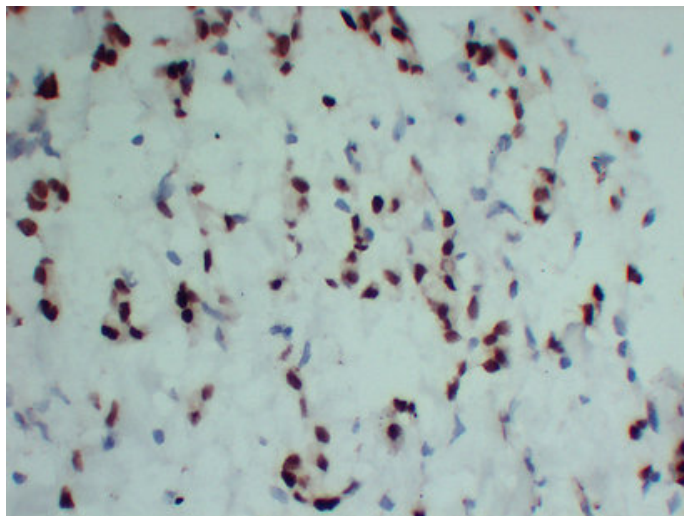




Progesterone Receptor(PR) (6P2) mouse mAb

Catalog_no :	AM6666
Applications :	IHC-p
Reactivity :	Human
Category :	抗原抗体
Size :	50μl/100μl
Gene_name :	PGR NR3C3
Protein_name :	Progesterone Receptor(PR)
Humanswissprot_no :	P06401
Immunogen :	Synthesized peptide derived from human Progesterone Receptor(PR)
Specificity :	This antibody detects endogenous levels of human Progesterone Receptor(PR)
Formulation :	Liquid in PBS containing 50% glycerol, 0.5% BSA and 0.02% sodium azide.
Source :	Mouse/IgG1, Kappa
Dilution :	IHC-p 1:100-500
Purification :	The antibody was affinity-purified from mouse ascites by affinity-chromatography using specific immunogen.
Concentration :	1 mg/ml
Storage_stability :	-20°C/1 year
Notes :	ovulation from ovarian follicle, epithelial cell development, epithelial cell maturation, reproductive developmental process, transcription, regulation of transcription, DNA-dependent, intracellular signaling cascade, cell-cell signaling,gamete gener

Product Images



Immunohistochemical analysis of paraffin-embedded Breast carcinoma-high magnification. 1, Antibody was diluted at 1:200(4°,overnight). 2, TRIS-EDTA of pH8.0 was used for antigen retrieval. 3,Secondary antibody was diluted at 1:200(room temperature, 30min).