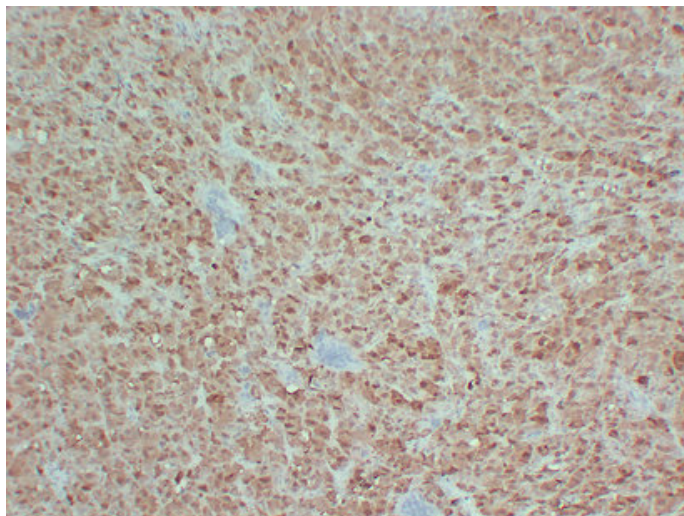


## S100 (1E1) mouse mAb

Catalog_no :	AM6669
Applications :	IHC-p
Reactivity :	Human
Category :	抗原抗体
Size :	50µl/100µl
Gene_name :	S100B
Protein_name :	S100
Humanswissprot_no :	<a href="#">P04271</a>
Immunogen :	Synthesized peptide derived from human S100
Specificity :	This antibody detects endogenous levels of human S100
Formulation :	Liquid in PBS containing 50% glycerol, 0.5% BSA and 0.02% sodium azide.
Source :	Mouse/IgG1, Kappa
Dilution :	IHC-p 1:100-500
Purification :	The antibody was affinity-purified from mouse ascites by affinity-chromatography using specific immunogen.
Concentration :	1 mg/ml
Storage_stability :	-20°C/1 year
Notes :	cell morphogenesis, cell morphogenesis involved in differentiation, axonogenesis, behavior, learning or memory, cell proliferation, cell projection organization, neuron differentiation, neuron projection development, cellular component morphogenesis,

## Product Images



Immunohistochemical analysis of paraffin-embedded Malignant melanoma. 1, Antibody was diluted at 1:200(4°,overnight). 2, Citrate buffer of pH6.0 was used for antigen retrieval. 3,Secondary antibody was diluted at 1:200(room temperature, 30min).