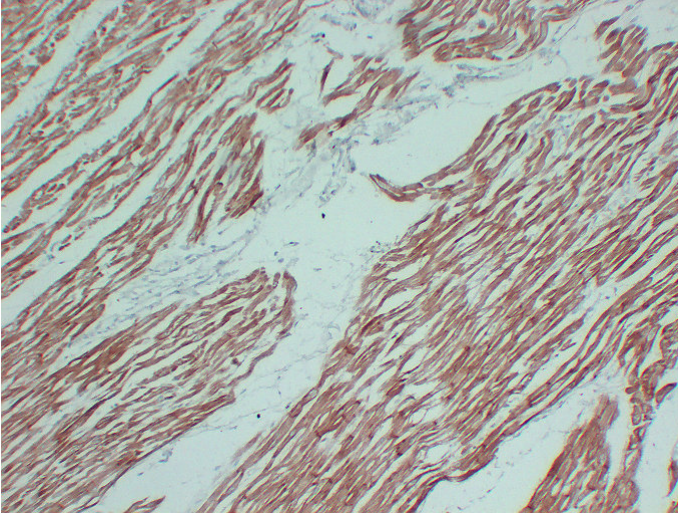


Actin, sarcomeric muscle(4S5) mouse mAb

Catalog_no :	AM6604
Applications :	IHC-p
Reactivity :	Human
Category :	抗原抗体
Size :	50µl/100µl
Gene_name :	ACTA1 ACTA ACTC1 ACTC
Humanswissprot_no :	P68133/P68032
Immunogen :	Synthesized peptide derived from human Actin, sarcomeric muscle
Specificity :	This antibody detects endogenous levels of human
Formulation :	Liquid in PBS containing 50% glycerol, 0.5% BSA and 0.02% sodium azide.
Source :	Mouse IgG
Dilution :	IHC-p 1:100-500
Purification :	The antibody was affinity-purified from mouse ascites by affinity-chromatography using specific immunogen.
Concentration :	1 mg/ml
Storage_stability :	-20°C/1 year
Notes :	muscle system process, muscle contraction, cytoskeleton organization, actin filament organization, muscle organ development, skeletal muscle tissue development, regulation of cell size, response to mechanical stimulus, response to abiotic stimulus, r

Product Images



Immunohistochemical analysis of paraffin-embedded human Myocardium. 1,Actin, sarcomeric muscle Antibody was diluted at 1:200(4°,overnight). 2, Citrate buffer of pH6.0 was used for antigen retrieval