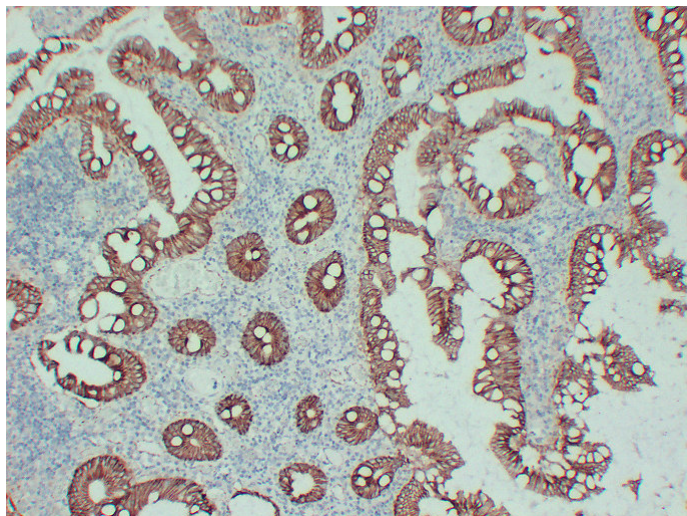




Beta-catenin(8X6) mouse mAb

Catalog_no :	AM6676
Applications :	IHC-p,WB
Reactivity :	Human
Category :	抗原抗体
Size :	50µl/100µl
Gene_name :	CTNNB1 CTNNB OK/SW-cl.35 PRO2286
Protein_name :	Catenin beta-1 (Beta-catenin)
Humanswissprot_no :	P35222
Immunogen :	Synthesized peptide derived from human Beta-catenin
Specificity :	This antibody detects endogenous levels of human Catenin beta-1 (Beta-catenin)
Formulation :	Liquid in PBS containing 50% glycerol, 0.5% BSA and 0.02% sodium azide.
Source :	Mouse/IgG2b, Kappa
Dilution :	IHC-p 1:100-500 , WB 1:500-2000
Purification :	The antibody was affinity-purified from mouse ascites by affinity-chromatography using specific immunogen.
Concentration :	1 mg/ml
Storage_stability :	-20°C/1 year
Notes :	negative regulation of transcription from RNA polymerase II promoter, microtubule cytoskeleton organization,embryonic axis specification, cell morphogenesis, cell morphogenesis involved in differentiation, skeletal system development, angiogenesis, b

Product Images



Immunohistochemical analysis of paraffin-embedded human Colon carcinoma. 1, Beta-catenin Antibody was diluted at 1:200 (4°, overnight). 2, EDTA pH 9.0 was used for antigen retrieval