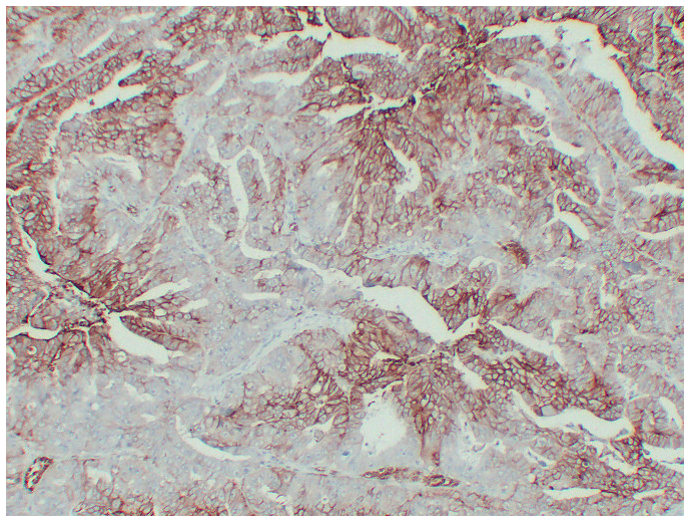


## GLUT-1(7H4) mouse mAb

Catalog_no :	AM6634
Applications :	IHC-p
Reactivity :	Human
Category :	抗原抗体
Size :	50µl/100µl
Gene_name :	SLC2A1 GLUT1
Protein_name :	Solute carrier family 2, facilitated glucose transporter member 1 (Glucose transporter type 1, erythrocyte/brain) (GLUT-1) (HepG2 glucose transporter)
Humanswissprot_no :	<a href="#">P11166</a>
Immunogen :	Synthesized peptide derived from human GLUT-1
Specificity :	This antibody detects endogenous levels of human Solute carrier family 2, facilitated glucose transporter member 1 (Glucose transporter type 1, erythrocyte/brain) (GLUT-1) (HepG2 glucose transporter)
Formulation :	Liquid in PBS containing 50% glycerol, 0.5% BSA and 0.02% sodium azide.
Source :	Mouse/IgG3, Kappa
Dilution :	IHC-p 1:100-500
Purification :	The antibody was affinity-purified from mouse ascites by affinity-chromatography using specific immunogen.
Concentration :	1 mg/ml
Storage_stability :	-20°C/1 year
Notes :	response to osmotic stress, carbohydrate transport, hexose transport, response to abiotic stimulus, monosaccharide transport, glucose transport, xenobiotic transport, transmembrane transport,

## Product Images



Immunohistochemical analysis of paraffin-embedded human Colon carcinoma. 1, GLUT-1 Antibody was diluted at 1:200(4°, overnight). 2, EDTA pH 8.0 was used for antigen retrieval