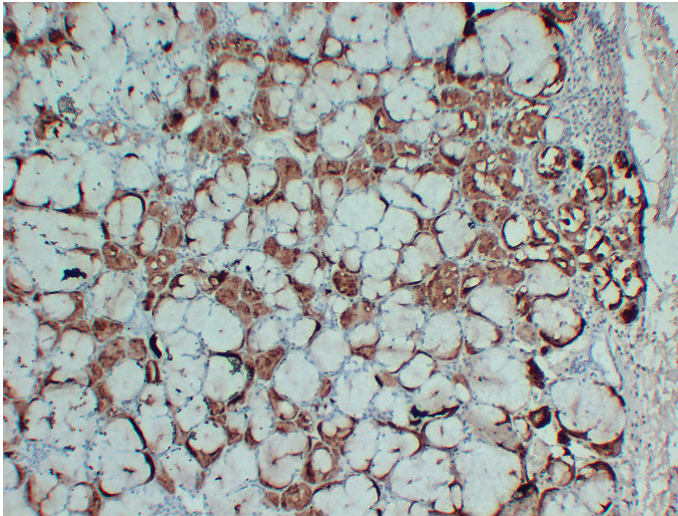


Gross cystic disease fluid protein-15(3G7) mouse mAb

Catalog_no :	AM6635
Applications :	IHC-p
Reactivity :	Human
Category :	抗原抗体
Size :	50µl/100µl
Gene_name :	PIP GCDFP15 GPIP4
Protein_name :	Prolactin-inducible protein (Gross cystic disease fluid protein 15) (GCDFP-15) (Prolactin-induced protein) (Secretory actin-binding protein) (SABP) (gp17)
Humanswissprot_no :	P12273
Immunogen :	Synthesized peptide derived from human Gross cystic disease fluid protein-15 (GCDFP-15)
Specificity :	This antibody detects endogenous levels of human Prolactin-inducible protein (Gross cystic disease fluid protein 15) (GCDFP-15) (Prolactin-induced protein) (Secretory actin-binding protein) (SABP) (gp17)
Formulation :	Liquid in PBS containing 50% glycerol, 0.5% BSA and 0.02% sodium azide.
Source :	Mouse/IgG1, Kappa
Dilution :	IHC-p 1:100-500
Purification :	The antibody was affinity-purified from mouse ascites by affinity-chromatography using specific immunogen.
Concentration :	1 mg/ml
Storage_stability :	-20°C/1 year

Product Images



Immunohistochemical analysis of paraffin-embedded human Salivary glands. 1, Gross cystic disease fluid protein-15 (GCDFP-15) Antibody was diluted at 1:200(4°, overnight). 2, EDTA pH 8.0 was used for antigen retrieval