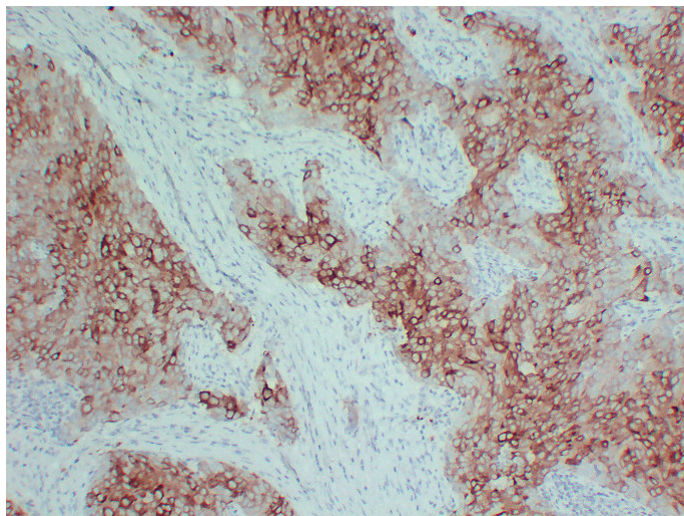


pS2(6M1) mouse mAb

Catalog_no :	AM6650
Applications :	IHC-p
Reactivity :	Human
Category :	抗原抗体
Size :	50µl/100µl
Gene_name :	TFF1 BCEI PS2
Protein_name :	Trefoil factor 1 (Breast cancer estrogen-inducible protein) (PNR-2) (Polypeptide P1.A) (hP1.A) (Protein pS2)
Humanswissprot_no :	P04155
Immunogen :	Synthesized peptide derived from human pS2
Specificity :	This antibody detects endogenous levels of human Trefoil factor 1 (Breast cancer estrogen-inducible protein) (PNR-2) (Polypeptide P1.A) (hP1.A) (Protein pS2)
Formulation :	Liquid in PBS containing 50% glycerol, 0.5% BSA and 0.02% sodium azide.
Source :	Mouse/IgG2a, Kappa
Dilution :	IHC-p 1:100-500
Purification :	The antibody was affinity-purified from mouse ascites by affinity-chromatography using specific immunogen.
Concentration :	1 mg/ml
Storage_stability :	-20°C/1 year
Notes :	tissue homeostasis, digestion, response to endogenous stimulus, response to hormone stimulus, response to organic substance, response to inorganic substance, response to metal ion, response to iron ion, epithelial structure maintenance, digestive sys

Product Images



Immunohistochemical analysis of paraffin-embedded human Breast carcinoma. 1, pS2 Antibody was diluted at 1:200 (4°, overnight). 2, Citrate buffer of pH 6.0 was used for antigen retrieval