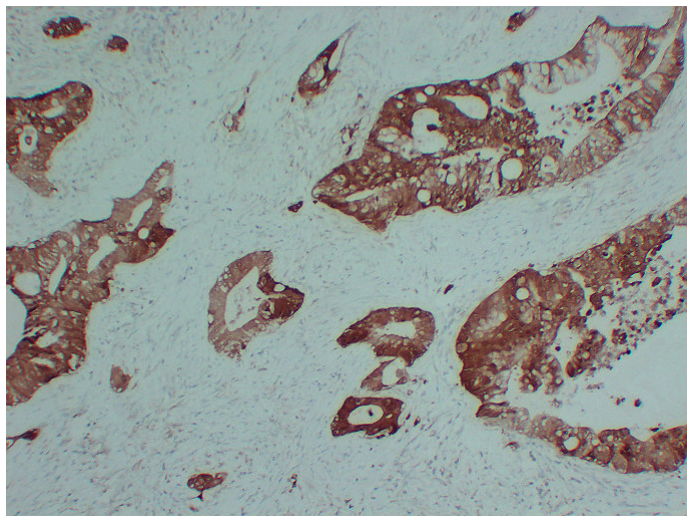




S100A6(6L1) mouse mAb

Catalog_no :	AM6651
Applications :	IHC-p
Reactivity :	Human
Category :	抗原抗体
Size :	50µl/100µl
Gene_name :	S100A6 CACY
Protein_name :	Protein S100-A6 (Calcyclin) (Growth factor-inducible protein 2A9) (MLN 4) (Prolactin receptor-associated protein) (PRA) (S100 calcium-binding protein A6)
Humanswissprot_no :	P06703
Immunogen :	Synthesized peptide derived from human S100A6
Specificity :	This antibody detects endogenous levels of human Protein S100-A6 (Calcyclin) (Growth factor-inducible protein 2A9) (MLN 4) (Prolactin receptor-associated protein) (PRA) (S100 calcium-binding protein A6)
Formulation :	Liquid in PBS containing 50% glycerol, 0.5% BSA and 0.02% sodium azide.
Source :	Mouse/IgG1, Kappa
Dilution :	IHC-p 1:100-500
Purification :	The antibody was affinity-purified from mouse ascites by affinity-chromatography using specific immunogen.
Concentration :	1 mg/ml
Storage_stability :	-20°C/1 year

Product Images



Immunohistochemical analysis of paraffin-embedded human Pancreatic adenocarcinoma. 1, S100A6 Antibody was diluted at 1:200 (4°, overnight). 2, EDTA pH 8.0 was used for antigen retrieval