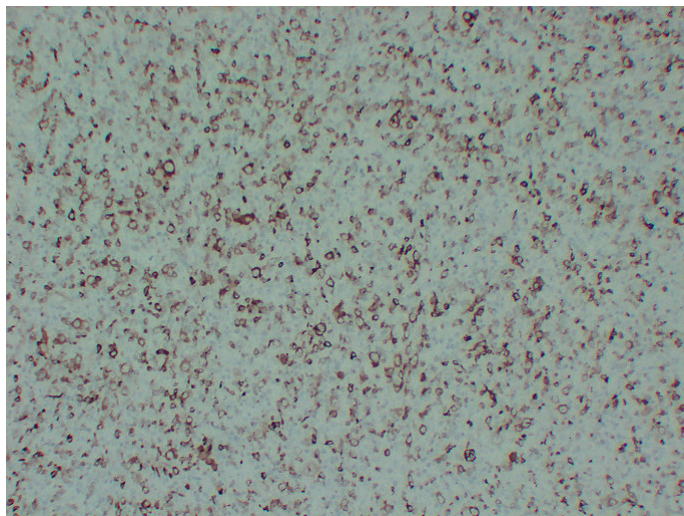


## Stathmin(8M6) mouse mAb

Catalog_no :	AM6682
Applications :	IHC-p,WB
Reactivity :	Human
Category :	抗原抗体
Size :	50μl/100μl
Gene_name :	STMN1 C1orf215 LAP18 OP18
Protein_name :	Stathmin (Leukemia-associated phosphoprotein p18) (Metablastin) (Oncoprotein 18) (Op18) (Phosphoprotein p19) (pp19) (Prosolin) (Protein Pr22) (pp17)
Humanswissprot_no :	<a href="#">P16949</a>
Immunogen :	Synthesized peptide derived from human Stathmin
Specificity :	This antibody detects endogenous levels of human Stathmin (Leukemia-associated phosphoprotein p18) (Metablastin) (Oncoprotein 18) (Op18) (Phosphoprotein p19) (pp19) (Prosolin) (Protein Pr22) (pp17)
Formulation :	Liquid in PBS containing 50% glycerol, 0.5% BSA and 0.02% sodium azide.
Source :	Mouse/IgG2b, Kappa
Dilution :	IHC-p 1:100-500 , WB 1:500-2000
Purification :	The antibody was affinity-purified from mouse ascites by affinity-chromatography using specific immunogen.
Concentration :	1 mg/ml
Storage_stability :	-20°C/1 year
Notes :	microtubule cytoskeleton organization, mitotic cell cycle, M phase, cytoskeleton organization, microtubule-based process, microtubule depolymerization, cell cycle, spindle organization, mitotic spindle organization, intracellular signaling cascade, c

## Product Images



Immunohistochemical analysis of paraffin-embedded human Hodgkin's lymphoma. 1, Stathmin Antibody was diluted at 1:200 (4°, overnight). 2, EDTA pH 9.0 was used for antigen retrieval