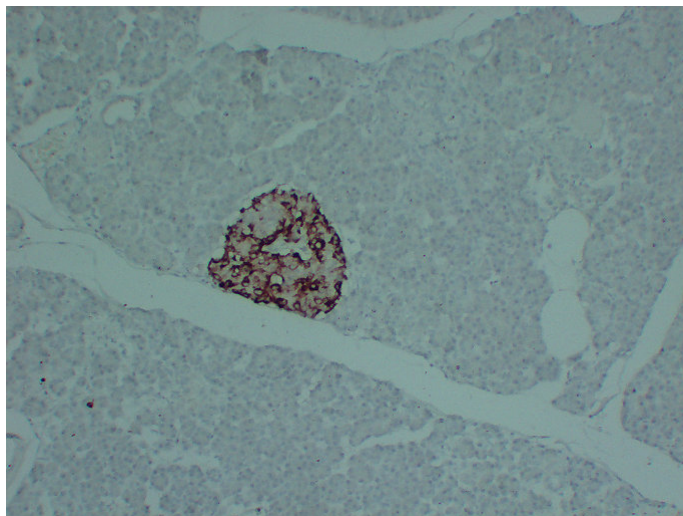




Tissue Inhibitor of Metalloproteinases 1(4V3) mouse mAb

Catalog_no :	AM6655
Applications :	IHC-p
Reactivity :	Human
Category :	抗原抗体
Size :	50µl/100µl
Gene_name :	TIMP1 CLGI TIMP
Protein_name :	Metalloproteinase inhibitor 1 (Erythroid-potentiating activity) (EPA) (Fibroblast collagenase inhibitor) (Collagenase inhibitor) (Tissue inhibitor of metalloproteinases 1) (TIMP-1)
Humanswissprot_no :	P01033
Immunogen :	Synthesized peptide derived from human Tissue Inhibitor of Metalloproteinases 1(TIMP1)
Specificity :	This antibody detects endogenous levels of human Metalloproteinase inhibitor 1 (Erythroid-potentiating activity) (EPA) (Fibroblast collagenase inhibitor) (Collagenase inhibitor) (Tissue inhibitor of metalloproteinases 1) (TIMP-1)
Formulation :	Liquid in PBS containing 50% glycerol, 0.5% BSA and 0.02% sodium azide.
Source :	Mouse/IgG1, Kappa
Dilution :	IHC-p 1:100-500
Purification :	The antibody was affinity-purified from mouse ascites by affinity-chromatography using specific immunogen.
Concentration :	1 mg/ml
Storage_stability :	-20°C/1 year
Notes :	immune system development, positive regulation of cell proliferation, regulation of catabolic process, negative regulation of catabolic process, negative regulation of macromolecule metabolic process, developmental maturation,hemopoiesis, myeloid cel

Product Images



Immunohistochemical analysis of paraffin-embedded human Pancreas. 1, Tissue Inhibitor of Metalloproteinases 1 (TIMP1) Antibody was diluted at 1:200 (4°, overnight). 2, Citrate buffer of pH 6.0 was used for antigen retrieval