

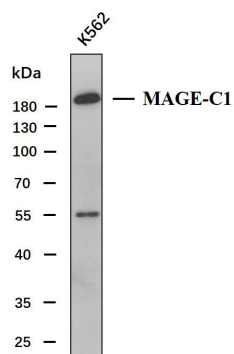


MAGE-C1(5H3) mouse mAb

Catalog_no :	AM6586
Applications :	IHC-p, WB
Reactivity :	Human
Category :	抗原抗体
Size :	50μl/100μl
Gene_name :	MAGEC1
Protein_name :	Melanoma-associated antigen C1 (Cancer/testis antigen 7.1) (CT7.1) (MAGE-C1 antigen)
Humanswissprot_no :	O60732
Immunogen :	Synthesized peptide derived from human MAGE-C1
Specificity :	This antibody detects endogenous levels of human Melanoma-associated antigen C1 (Cancer/testis antigen 7.1) (CT7.1) (MAGE-C1 antigen)
Formulation :	Liquid in PBS containing 50% glycerol, 0.5% BSA and 0.02% sodium azide.
Source :	Mouse IgG
Dilution :	IHC-p 1:100-500 , WB 1:500-2000
Purification :	The antibody was affinity-purified from mouse ascites by affinity-chromatography using specific immunogen.
Concentration :	1 mg/ml
Storage_stability :	-20°C/1 year

Product Images

Western blot analysis of MAGE-C1Antibody at 1:1000 dilution.



Whole cell lysates of K562(30ug) were separated by 10% SDS-PAGE, and the membrane was blotted with MAGE-C1 antibody. The HRP-conjugated anti-Mouse IgG antibody was used to detect the antibody.

Predicted band size: 124kDa
Observed band size: 190kDa